

PAGHOLZ® SWIVEL SPINDLE STOOL

PRODUCT-DETAIL.MODEL-7936



STANDARD VERSION

PAGWOOD® seat, with ergonomic two-dimensional shell shape. Surface melamine coated and pore sealed with a scratch, impact and abrasion resistant finish created in the pressing process.

Steel 5-star base, infinitely variable height adjustment by concealed steel swivel spindle with anti-rotation device. Round tubular column: 50 mm, epoxy coated. Floor protector with step protection.

Chair size 5-7 corresponds to stool size 0-3.

OPTIONS

- Seat decors (beech, maple, gray-white)
- PAGHOLZ® COLOUR WOOD
- Multiplex COLOUR WOOD
- PAGHOLZ® Color Wood - Price group 2
- Multiplex shell
- Felt floor protectors

CONFIGURATION

- PAGHOLZ® Colour Wood | PAGHOLZ® Colour Wood price group 1, PAGHOLZ® Colour Wood price group 2, PAGHOLZ® COLOUR WOOD

STANDARD

FEMB level:2017 (Level 3)

DIN EN 1729-1, DIN EN 1729-2

LOAD CAPACITY

120 kg

SIZES

SIZE	5-7
CHAIR WIDTH	71 cm
SEAT HEIGHT	09-38 cm
CHAIR DEPTH	71 cm
STACKABILITY	-
WEIGHT	7 kg

Our range of materials and colors can be found in the A2S material overview.



A2S-Furnishing Systems Ltd.
ASS-Einrichtungssysteme GmbH
info@ass.de
WWW.A2S.COM

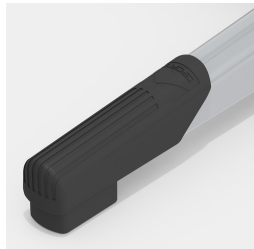
PAGHOLZ® SWIVEL SPINDLE STOOL PRODUCT-DETAIL.MODEL-7936



BENEFITS/SPECIALS



PAGHOLZ® from sustainable forestry



Robust plastic floor protectors with step protection



Indestructible PAGHOLZ® shell, scratch, break and impact resistant; flame retardant



Extremely robust steel base