

# MAILBOX CABINET, LOCKABLE

## PRODUCT-DETAIL.MODEL-4477.450



### STANDARD VERSION

Body, 3-layer particle board (E1), melamine coated, highly abrasion-resistant, with 1 mm plastic edge, thickness 19 mm.

Rear panel, 3-layer chipboard (E1), melamine-coated, highly abrasion-resistant, grooved all around, thickness 8 mm.

Back panel, 3-layer chipboard (E1), melamine coated, highly abrasion-resistant, grooved all around, thickness 8 mm.

Cabinet including base.

Teacher compartments individually lockable.

**Note:** 1 folder height (OH)  $\pm$  38.4 cm

### OPTIONS

- Decoration group 2
- Front HPL glued
- Shelf (additional)
- Handle PG 2
- Lock with pin cylinder change core
- Base adjustment
- Steel base (chrome silver 9006)

### STANDARD

DIN EN 14074, DIN EN 14073-2, DIN EN 14073-3, DIN EN 16121, DIN EN 16122

FEMB level:2017 (Level 3)

### TECHNICAL SPECIFICATIONS

FOLDER HEIGHT	5
WIDTH	71 cm
TOTAL HEIGHT	208 cm
DEPTH	22 cm
INSIDE MEASURE COMPARTMENTS	11x11x11 cm
NO. OF COMPARTMENTS	24
NO. OF ADJUSTABLE SHELVES	1
NO. OF FIXED SHELVES	1
WEIGHT	17 kg

Our range of materials and colors can be found in the A2S material overview.



A2S-Furnishing Systems Ltd.  
ASS-Einrichtungssysteme GmbH  
info@ass.de  
WWW.A2S.COM

# MAILBOX CABINET, LOCKABLE

## PRODUCT-DETAIL.MODEL-4477.450



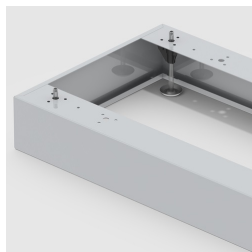
### BENEFITS/SPECIALS



Board material melamine  
coated with robust plastic edge



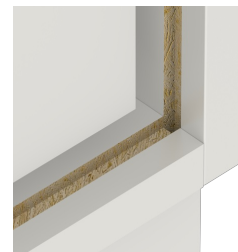
Metal cup hinges with 240°  
opening angle



Optionally with robust steel  
base



Carcass firmly doweled and  
glued ex works



Resistance to warping due to 8  
mm thick back wall