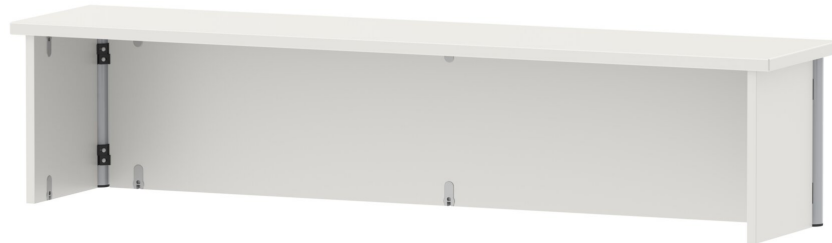


TABLE TOP FOR RECTANGULAR TABLE, FREE STANDING

PRODUCT-DETAIL.MODEL-2053.160



STANDARD VERSION

Body, 3-layer particle board (E1), melamine coated, highly abrasion-resistant, with 1 mm plastic edge, thickness 19 mm.
Top, 3-layer chipboard (E1), melamine coated, highly abrasion resistant, with 3 mm plastic edge, thickness: 25 mm.
Round tube: 40/2 mm, epoxy coated

OPTIONS

- Decoration group 2
- Table top with 40 mm corner radius
- Table top HPL glued
- Table frame chrome plated

CONFIGURATION

- Finishes | Finishes Price group 1, Finishes Price group 2

TECHNICAL SPECIFICATIONS

| | |
|--------|--------|
| WIDTH | 110 cm |
| HEIGHT | 36 cm |
| DEPTH | 36 cm |
| WEIGHT | 48 kg |

BENEFITS/SPECIALS



Melamine coated table top with robust plastic edge



High and deep enough for standard binders



Elegant look: continuous table leg

Our range of materials and colors can be found in the A2S material overview.

