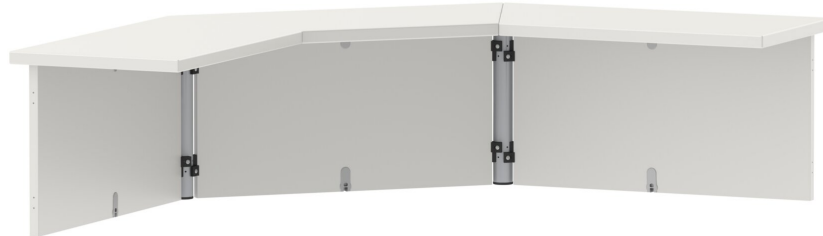


# TABLE EXTENSION FOR HEXAGONAL TABLE, LINKING ON BOTH SIDES

PRODUCT-DETAIL.MODEL-2054.072



## STANDARD VERSION

Body, 3-layer particle board (E1), melamine coated, highly abrasion-resistant, with 1 mm plastic edge, thickness 19 mm.

Top, 3-layer chipboard (E1), melamine coated, highly abrasion resistant, with 3 mm plastic edge, thickness: 25 mm.

Round tube: 40/2 mm, epoxy coated

## OPTIONS

- Decoration group 2
- Table top with 40 mm corner radius
- Table top HPL glued
- Table frame chrome plated

## CONFIGURATION

- Finishes | Finishes Price group 1, Finishes Price group 2

## TECHNICAL SPECIFICATIONS

TOTAL HEIGHT	36 cm
DEPTH	36 cm
PLAN DIMENSION	120 x 120 cm
ADJUSTMENT DIMENSION	70 cm
WEIGHT	32 kg

Our range of materials and colors can be found in the A2S material overview.



A2S-Furnishing Systems Ltd.  
ASS-Einrichtungssysteme GmbH  
info@ass.de  
WWW.A2S.COM

# TABLE EXTENSION FOR HEXAGONAL TABLE, LINKING ON BOTH SIDES

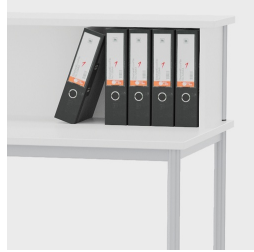
PRODUCT-DETAIL.MODEL-2054.072



## BENEFITS/SPECIALS



Melamine coated table top with robust plastic edge



High and deep enough for standard binders



Elegant look: continuous table leg