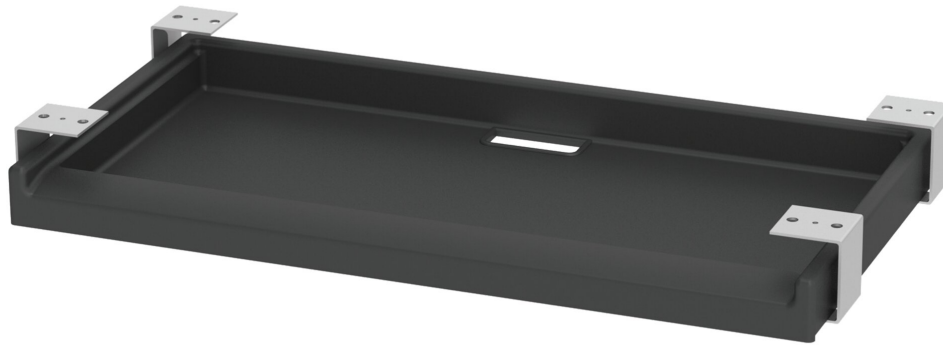


KEYBOARD PULLOUT

PRODUCT-DETAIL.MODEL-0909



STANDARD VERSION

Keyboard drawer for mounting under the table top. Plastic housing with integrated pull-out guide for keyboards from: W 53 cm/D 21 cm/H 5 cm. Gray plastic.

TECHNICAL SPECIFICATIONS

WIDTH	03 cm
HEIGHT	7 cm
DEPTH	21 cm

BENEFITS/SPECIALS



Can be retrofitted at any time

Our range of materials and colors can be found in the A2S material overview.



A2S-Furnishing Systems Ltd.
ASS-Einrichtungssysteme GmbH
info@ass.de
WWW.A2S.COM