

DRAWER CABINET, 2 OH (W 120CM/D 42CM), 6 DRAWERS

PRODUCT-DETAIL.MODEL-4543.820



STANDARD VERSION

Body, 3-layer particle board (E1), melamine coated, highly abrasion-resistant, with 1 mm plastic edge, thickness 19 mm.

Back panel, 3-layer chipboard (E1), melamine coated, highly abrasion-resistant, grooved all around, thickness 8 mm.

Drawer front made of 3-layer chipboard (E1), melamine coated, highly abrasion-resistant, with 2 mm plastic edge, thickness: 19 mm. Full-extension runner with retraction damping. Lockable, security lock with exchangeable cylinder (for 1 OH either lock or handle).

Comes standard with folding base, PP-coated 3-layer chipboard (E1), 22 mm thick. Base height: 10 cm.

Free-standing cabinets from a height of 50H and free-standing cabinets with pull-outs (filing cabinets and drawer cabinets) must be fixed to the floor.

OPTIONS

- Decoration group 2
- Front decors price group 2
- Handle PG 2
- Handle PG 3
- Handle PG 4
- Base adjustment
- Steel base (chrome silver 9006)

CONFIGURATION

- Finishes | Finishes Price group 1, Finishes Price group 2

STANDARD

DIN EN 14074, DIN EN 14073-2, DIN EN 14073-3, DIN EN 16121, DIN EN 16122

FEMB level:2017 (Level 3)

TECHNICAL SPECIFICATIONS

FOLDER HEIGHT	2
WIDTH	120 cm
TOTAL HEIGHT	119 cm
DEPTH	42 cm
WEIGHT	11 kg

Our range of materials and colors can be found in the A2S material overview.



A2S-Furnishing Systems Ltd.
ASS-Einrichtungssysteme GmbH
info@ass.de
WWW.A2S.COM

DRAWER CABINET, 2 OH (W 120CM/D 42CM), 6 DRAWERS

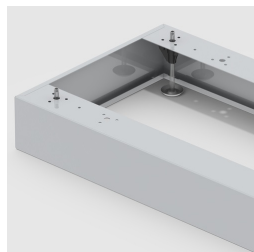
PRODUCT-DETAIL.MODEL-4543.820



BENEFITS/SPECIALS



Board material melamine coated with robust plastic edge



Optionally with robust steel base



Smooth-running drawers with roller bearings and soft-closing mechanism



Resistance to warping due to 8 mm thick back wall



Carcass firmly doweled and glued ex works