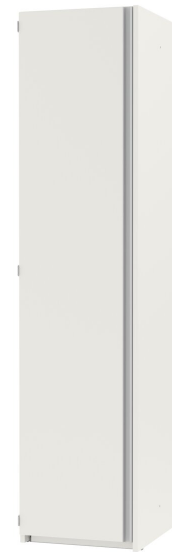


HALL CUPBOARD, 5 OH (W 48 CM/D 58 CM), 1-DOOR, WITH COAT HOOKS, FOR STOOL PRODUCT-DETAIL.MODEL-6672.950



STANDARD VERSION

Note: 1 folder height (OH) $\hat{=}$ 38.4 cm

Hallway cabinet 5 OH, 1 door; optionally with 1 large tidy box or 2 small tidy boxes at the bottom. Designed for stools mod. 6690.200 or 6690.900. Material: body, base and shelves made of 3-layer chipboard (E1), melamine-coated, thickness 19 mm. Body and shelves with 1 mm plastic edge, doors with 2 mm plastic edge. Door coated with HPL on both sides, making it particularly scratch-resistant. Door with continuous aluminium handle strip in silver. Support plate material and decor in pure white U400, flame retardant for use in public areas. Elements connected to each other with connecting screws.

OPTIONS

- Stool with storage compartment and recessed grip under the seat.
- Plate cylinder
- Lock with pin cylinder change core
- Front decors Price group 1
- Front decors price group 2

CONFIGURATION

- Finishes | Finishes Price group 1, Finishes Price group 2

STANDARD

FEMB level:2017 (Level 3)

GS-zertifiziert gem. DIN EN 15372:2017-02

TECHNICAL SPECIFICATIONS

| | |
|----------------------|--------|
| FOLDER HEIGHT | 5 |
| WIDTH | 48 cm |
| TOTAL HEIGHT | 208 cm |
| DEPTH | 48 cm |
| NO. OF FIXED SHELVES | 2 |
| WEIGHT | 11 kg |

Our range of materials and colors can be found in the A2S material overview.



A2S-Furnishing Systems Ltd.
ASS-Einrichtungssysteme GmbH
info@ass.de
WWW.A2S.COM

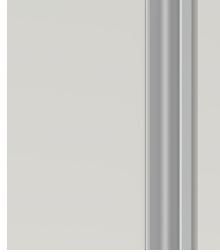
HALL CUPBOARD, 5 OH (W 48 CM/D 58 CM), 1-DOOR, WITH COAT HOOKS, FOR STOOL PRODUCT-DETAIL.MODEL-6672.950



BENEFITS/SPECIALS



Board material melamine coated with robust plastic edge



Cabinet-height handles keep the escape route clear and are easy to reach from any height.



In 3 different equipment variants.



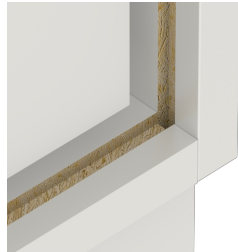
Pull-out proof shelf supports



Pull-out stool that provides non-slip support.



Support panel material flame-retardant according to DIN 4102 B1



Resistance to warping due to 8 mm thick back wall



Carcass firmly doweled and glued ex works