

# FLEXLAB TRANSPORT CADDY

## PRODUCT-DETAIL.MODEL-4131.002



### STANDARD VERSION

Body: 3-layer chipboard (E1), melamine resin coated, highly abrasion resistant, with 2 mm plastic edge, thickness: 19 mm, decor in U023.  
4 swivel castors, 2 of which have total brakes.  
Open storage compartment at the top, space for up to 9 small tidy boxes at the bottom.

### STANDARD

GS-certified according to DIN EN 1729-1, DIN EN 1729-2

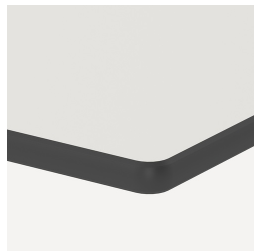
### TECHNICAL SPECIFICATIONS

WIDTH	37 cm
TOTAL HEIGHT	110 cm
DEPTH	49 cm
WEIGHT	29 kg

### BENEFITS/SPECIALS



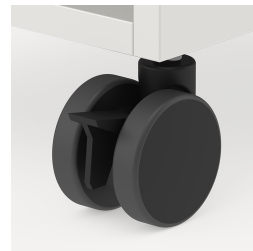
Board material melamine coated with robust plastic edge



Robust and resistant CDF panel



Tidy boxes for storing gloves, hats etc.



Mobility thanks to 4 sturdy castors, 2 of which are lockable



Additional work surface thanks to top shelf

Our range of materials and colors can be found in the A2S material overview.



A2S-Furnishing Systems Ltd.  
ASS-Einrichtungssysteme GmbH  
info@ass.de  
WWW.A2S.COM