

# FLEXLAB TRANSPORT CADDY WITH DOOR

## PRODUCT-DETAIL.MODEL-4131.001



### STANDARD VERSION

Body: 3-layer chipboard (E1), melamine resin coated, highly abrasion resistant, with 2 mm plastic edge, thickness: 19 mm, decor in U023.

4 swivel castors, 2 of which have total brakes.

Open storage compartment at the top, space for up to 9 small tidy boxes at the bottom.

Lockable door made of compressed fiberboard with black core, thickness: 16 mm, with 270° opening angle, with acrylic glass panel, left hinged.

### STANDARD

GS-certified according to DIN EN 1729-1, DIN EN 1729-2

### TECHNICAL SPECIFICATIONS

WIDTH	37 cm
TOTAL HEIGHT	100 cm
DEPTH	00 cm
WEIGHT	37 kg

Our range of materials and colors can be found in the A2S material overview.



A2S-Furnishing Systems Ltd.  
ASS-Einrichtungssysteme GmbH  
info@ass.de  
WWW.A2S.COM

# FLEXLAB TRANSPORT CADDY WITH DOOR

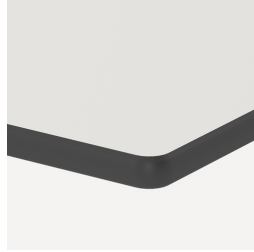
## PRODUCT-DETAIL.MODEL-4131.001



### BENEFITS/SPECIALS



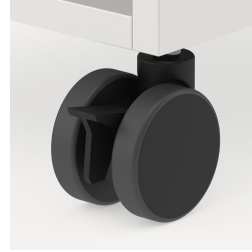
Board material melamine coated with robust plastic edge



Robust and resistant CDF panel



Tidy boxes for storing gloves, hats etc.



Mobility thanks to 4 sturdy castors, 2 of which are lockable



The glazed front provides a clear view of the materials



Additional work surface thanks to top shelf