

# FLEXLAB TRANSPORT CADDY WITH TOP PLATE AND DOOR

PRODUCT-DETAIL.MODEL-4131.003



## STANDARD VERSION

Body: 3-layer chipboard (E1), melamine resin coated, highly abrasion resistant, with 2 mm plastic edge, thickness: 19 mm, decor in U023.

4 swivel castors, 2 of which have total brakes.

Open storage compartment at the top, space for up to 9 small tidy boxes at the bottom.

Side support strip and locking mechanism for top panel made of compressed fiberboard with black core, thickness: 16 mm, underside with cut-outs for form-fit connection with 2 FLEXLAB transport caddies.

Lockable door made of compressed fiberboard with black core, thickness: 16 mm, with 270° opening angle, with acrylic glass panel, left hinged.

## STANDARD

GS-certified according to DIN EN 1729-1, DIN EN 1729-2

## TECHNICAL SPECIFICATIONS

WIDTH	38 cm
TOTAL HEIGHT	110 cm
DEPTH	02 cm
WEIGHT	81 kg

Our range of materials and colors can be found in the A2S material overview.



A2S-Furnishing Systems Ltd.  
ASS-Einrichtungssysteme GmbH  
info@ass.de  
WWW.A2S.COM

# FLEXLAB TRANSPORT CADDY WITH TOP PLATE AND DOOR

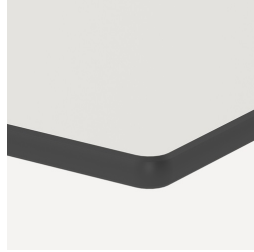
PRODUCT-DETAIL.MODEL-4131.003



## BENEFITS/SPECIALS



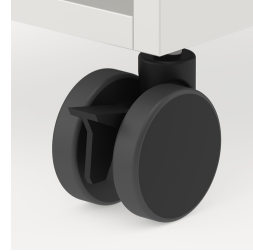
Board material melamine coated with robust plastic edge



Robust and resistant CDF panel



Tidy boxes for storing gloves, hats etc.



Mobility thanks to 4 sturdy castors, 2 of which are lockable



Side support rail and locking mechanism for top panel



The glazed front provides a clear view of the materials



Additional work surface thanks to top shelf