

PROPERTY CUPBOARD, 2 OH (W 138CM/D 50 CM), WITH DOOR

PRODUCT-DETAIL.MODEL-4011.620



STANDARD VERSION

Body, 3-layer particle board (E1), melamine coated, highly abrasion-resistant, with 1 mm plastic edge, thickness 19 mm.

Comes standard with folding base, PP-coated 3-layer chipboard (E1), 22 mm thick. Base height: 10 cm.

Free-standing cabinets from a height of 50H and free-standing cabinets with pull-outs (filing cabinets and drawer cabinets) must be fixed to the floor. The color assortment for the Tidy Boxes can be selected as desired. Please specify when ordering.

Optionally with 12 large or 24 small tidy boxes.

OPTIONS

- Decoration group 2
- with side handles
- with handles at the top
- Handle PG 2
- Handle PG 3
- Handle PG 4
- Castors for cabinet base
- Back wall covered with cork
- Magnetic back panel, white
- Base adjustment
- Steel base (chrome silver 9006)
- Front decors price group 2

CONFIGURATION

- Finishes | Finishes Price group 1, Finishes Price group 2

STANDARD

DIN EN 14074, DIN EN 14073-2, DIN EN 14073-3, DIN EN 16121, DIN EN 16122

FEMB level:2017 (Level 3)

TECHNICAL SPECIFICATIONS

FOLDER HEIGHT	2
WIDTH	1 · 8 cm
TOTAL HEIGHT	19 cm
DEPTH	0 · cm
WEIGHT	11 kg

Our range of materials and colors can be found in the A2S material overview.



A2S-Furnishing Systems Ltd.
ASS-Einrichtungssysteme GmbH
info@ass.de
WWW.A2S.COM

PROPERTY CUPBOARD, 2 OH (W 138CM/D 50 CM), WITH DOOR

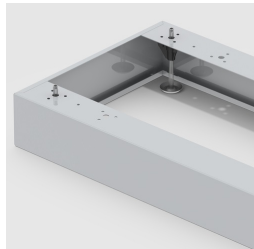
PRODUCT-DETAIL.MODEL-4011.620



BENEFITS/SPECIALS



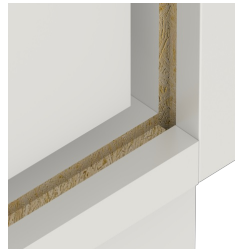
Board material melamine
coated with robust plastic edge



Optionally with robust steel
base



Mobile on 4 castors, 2 of which
are lockable



Resistance to warping due to 8
mm thick back wall



Carcass firmly doweled and
glued ex works