

BASE CABINET, MULTIFUNCTIONAL BOARD SYSTEM, WITH TIDY BOXES AND DOORS (W 70 CM)

PRODUCT-DETAIL.MODEL-4011.421



STANDARD VERSION

Body, 3-layer particle board (E1), melamine coated, highly abrasion-resistant, with 1 mm plastic edge, thickness 19 mm.

Back panel, 3-layer chipboard (E1), melamine coated, highly abrasion-resistant, grooved all around, thickness 8 mm.

Free-standing cabinets from a height of 50H and free-standing cabinets with pull-outs (filing cabinets and drawer cabinets) must be fixed to the floor.

Base unit for multifunctional sliding shelving system, matching the shelf units with Tidy Boxes 4740.070/4741.104

The color assortment for the Tidy Boxes can be selected as desired. Please specify when ordering.

Comes standard with folding base, PP-coated 3-layer chipboard (E1), 22 mm thick. Base height: 10 cm.

Material body, base and doors made of 3-layer chipboard (E1), melamine coated, material thickness 19 mm. Body and shelves with 1 mm plastic edge, doors with 2 mm plastic edge.

OPTIONS

- Decoration group 2
- Front decors price group 2
- Handle PG 2
- Handle PG 3
- Handle PG 4
- Base adjustment
- Steel base (chrome silver 9006)

CONFIGURATION

- Finishes | Finishes Price group 1, Finishes Price group 2

STANDARD

FEMB level:2017 (Level 3)

GS zertifiziert gem. DIN EN 16121:2024-04

TECHNICAL SPECIFICATIONS

WIDTH	V · cm
TOTAL HEIGHT	V 1 cm
DEPTH	0 · cm

Our range of materials and colors can be found in the A2S material overview.



A2S-Furnishing Systems Ltd.
ASS-Einrichtungssysteme GmbH
info@ass.de
WWW.A2S.COM

BASE CABINET, MULTIFUNCTIONAL BOARD SYSTEM, WITH TIDY BOXES AND DOORS (W 70 CM)

PRODUCT-DETAIL.MODEL-4011.421



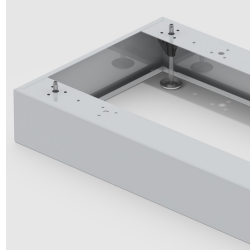
BENEFITS/SPECIALS



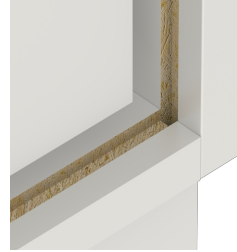
Board material melamine
coated with robust plastic edge



Tidy boxes for storing gloves,
hats etc.



Optionally with robust steel
base



Resistance to warping due to 8
mm thick back wall



Carcass firmly doweled and
glued ex works