

MONO-COLUMN TABLE, HEIGHT-ADJUSTABLE (W 120 CM/D 80 CM) BARREL SHAPE

PRODUCT-DETAIL.MODEL-7609.128



STANDARD VERSION

Tabletop, 3-layer chipboard (E1), melamine coated, highly abrasion-resistant, with 3 mm plastic edge, thickness: 25 mm.

Note: Table height specifications refer to a tabletop thickness of 25 mm.

Table mounting plate, steel: 3.0 mm.

Table column, pneumatic height adjustment, square: 67 x 67 mm. Height adjustment by means of safety hand release under the table top. Table column powder coated.

4-star powder coated base, with 4 double swivel locking casters with rubber coating.

Table top shape: barrel-shaped

OPTIONS

- Table top finishes price group 2
- Table top compact board 12 mm
- Front panel made of perforated steel plate
- Table top HPL glued
- Safe deposit drawer lockable

CONFIGURATION

- Finishes | Finishes Price group 1, Finishes Price group 2

STANDARD

GS-zertifiziert gem. DIN EN 15372

FEMB level:2017 (Level 3)

SIZES

TABLE WIDTH	120 cm
TABLE HEIGHT	111-111 cm
TABLE DEPTH	80 cm
STACKABILITY	-
NUMBER OF SEATS	1
WEIGHT	20 kg

Our range of materials and colors can be found in the A2S material overview.



A2S-Furnishing Systems Ltd.
 ASS-Einrichtungssysteme GmbH
 info@ass.de
 WWW.A2S.COM

MONO-COLUMN TABLE, HEIGHT-ADJUSTABLE (W 120 CM/D 80 CM) BARREL SHAPE PRODUCT-DETAIL.MODEL-7609.128



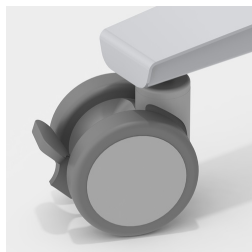
BENEFITS/SPECIALS



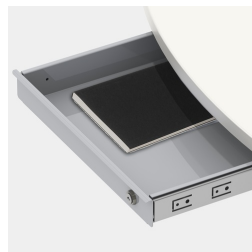
Melamine coated table top with robust plastic edge



Safety hand release prevents unintentional triggering of height adjustment



Including 4 robust double swivel casters with total locking device



Optionally with lockable steel valuables drawer



Infinitely height-adjustable in the range of 71-111 cm



Can also be used as a mobile lectern