

FLEX GAS LIFT SWIVEL CHAIR WITH TABLE SUSPENSION, SIZES 3-5

PRODUCT-DETAIL.MODEL-7876.005



STANDARD VERSION

Plastic shell ergonomically shaped. Material made of polypropylene, recyclable, manufactured in double-wall blown process. Thus soft sitting due to air cushioning effect, with integrated ventilation channels and groove to relieve the spine. Grip hole in the lumbar region and recessed grips on the upper edge of the backrest and underside of the chair.

Plastic 5-star base in black, with infinitely variable gas lift height adjustment. Round tubular column: 50 mm. Version with table suspension under the seat shell. With plastic feet.

OPTIONS

- 3D rocking mechanism
- Polished aluminum base
- Felt floor protectors
- Load-dependent braking casters (SH +3 cm)
- Partial foot ring

CONFIGURATION

- لون البلاستيك فليكس
- ألوان الإطار
- ألوان الإطار

STANDARD

FEMB level:2017 (Level 3)

DIN EN 1729-1, DIN EN 1729-2, DIN EN 16139

LOAD CAPACITY

120 kg

SIZES

| | |
|--------------|----------|
| SIZE | 3-5 |
| CHAIR WIDTH | 04 cm |
| CHAIR HEIGHT | 71-70 cm |
| SEAT HEIGHT | 40-34 cm |
| CHAIR DEPTH | 04 cm |
| STACKABILITY | - |
| WEIGHT | 1 kg |

Our range of materials and colors can be found in the A2S material overview.



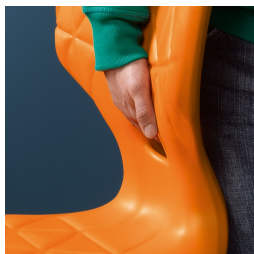
A2S-Furnishing Systems Ltd.
ASS-Einrichtungssysteme GmbH
info@ass.de
WWW.A2S.COM

FLEX GAS LIFT SWIVEL CHAIR WITH TABLE SUSPENSION, SIZES 3-5

PRODUCT-DETAIL.MODEL-7876.005



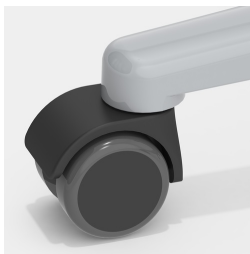
BENEFITS/SPECIALS



Easy to carry due to low weight



Height adjustment by safety
gas spring



Optionally with load-
dependent braked casters



Optionally with partial foot ring



Seat shell with integrated
ventilation channel



Extremely robust aluminum
base