



STANDARD VERSION

Body, 3-layer particle board (E1), melamine coated, highly abrasion-resistant, with 1 mm plastic edge, thickness 19 mm.

Rear panel, 3-layer chipboard (E1), melamine-coated, highly abrasion-resistant, grooved all around, thickness 8 mm.

The glued-in, 8 mm thick back panel gives the carcass its stability and strength.

Note: 1 folder height (OH) \pm 38.4 cm

Cabinet including base.

With base adjuster and base attachment panel.

Additional mounting of a cover plate.

OPTIONS

■ Decoration group 2

■ Cover plate

STANDARD

DIN EN 14074, DIN EN 14073-2, DIN EN 14073-3, DIN EN 16121, DIN EN 16122

FEMB level:2017 (Level 3)

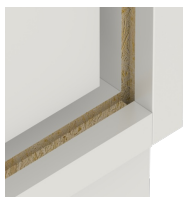
TECHNICAL SPECIFICATIONS

FOLDER HEIGHT	4
WIDTH	70 cm
TOTAL HEIGHT	165 cm
DEPTH	70 cm
ADJUSTMENT	42 cm
DIMENSION	
NO. OF FIXED	3
SHELVES	
WEIGHT	60 kg

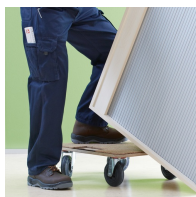
BENEFITS/SPECIALS



Board material melamine coated with robust plastic edge



Resistance to warping due to 8 mm thick back wall



Carcass firmly doweled and glued ex works