



STANDARD VERSION

Body, 3-layer particle board (E1), melamine coated, highly abrasion-resistant, with 1 mm plastic edge, thickness 19 mm.
Rear panel, 3-layer chipboard (E1), melamine-coated, highly abrasion-resistant, grooved all around, thickness 8 mm.
The glued-in, 8 mm thick back panel gives the carcass its stability and strength.

Note: 1 folder height (OH) \pm 38.4 cm

OPTIONS

- Decoration group 2
- Shelf (additional)

STANDARD

DIN EN 14074, DIN EN 14073-2, DIN EN 14073-3, DIN EN 16121, DIN EN 16122

FEMB level:2017 (Level 3)

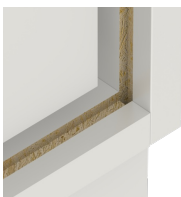
TECHNICAL SPECIFICATIONS

FOLDER HEIGHT	1
WIDTH	100 cm
HEIGHT OF TOP CABINET	40 cm
HEIGHT OF COMBI TOP CABINET	38 cm
DEPTH	58 cm
NO. OF ADJUSTABLE SHELVES	0
NO. OF FIXED SHELVES	0
WEIGHT	36 kg

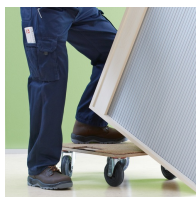
BENEFITS/SPECIALS



Board material melamine coated with robust plastic edge



Resistance to warping due to 8 mm thick back wall



Carcass firmly doweled and glued ex works