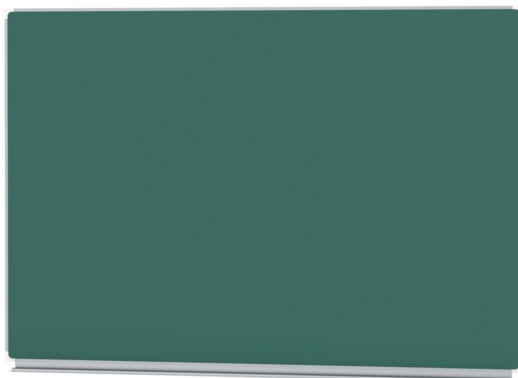


GREEN STEEL WALL BOARD (150X100 CM) MODEL 6810203



STANDARD VERSION

Long wall mounted board. Sandwich support panel, edges with natural anodized aluminum profiles and rounded plastic corners. Edging glued watertight.

Writing surface enamelled and magnetic green steel, glued to support plate. Board includes shelf strip.

OPTIONS

- Picture strip
- Picture clamp
- Rulings 01/ 02/ 03/ 04/ 05/ 07/ 08/ 10/ 11/ 12/ 15
- Blackboard eraser
- Eraser Felt
- Holder for whiteboard pens
- Whiteboard pen
- Magnets Ø 30 mm
- Power magnets Ø 36 mm
- Drawing tool set, 4 pieces
- Drawing tool set, 4 pieces
- Drawing tool set, 6 pieces

STANDARD

DIN EN 14434, DIN EN 71-3

TECHNICAL SPECIFICATIONS

WIDTH	150 cm
HEIGHT	101 cm
WEIGHT	20 kg
VERSION	wall mounted

Our range of materials and colors can be found in the A2S material overview.



A2S-Furnishing Systems Ltd.
ASS-Einrichtungssysteme GmbH
info@a2s.com
WWW.A2S.COM

GREEN STEEL WALL BOARD (150X100 CM) MODEL 6810203



BENEFITS/SPECIALS



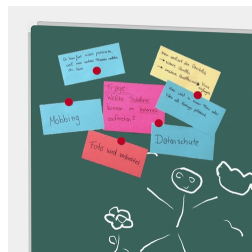
Optionally with picture clamping bar



Edge protection due to rounded safety corners



Matching shelf for chalk and pens



Magnetic surface can be written on with chalk