

FLEX GAS LIFT SWIVEL CHAIR

MODEL 7876



STANDARD VERSION

Plastic shell ergonomically shaped. Material made of polypropylene, recyclable, manufactured in double-wall blown process. Thus soft sitting due to air cushioning effect, with integrated ventilation channels and groove to relieve the spine. Grip hole in the lumbar region and recessed grips on the upper edge of the backrest and underside of the chair.

Aluminum 5-star base, with infinitely variable gas lift height adjustment. Round tubular column: 50 mm, epoxy coated. With plastic feet.

OPTIONS

- 3D rocking mechanism
- Polished aluminum base
- Felt floor protectors
- Load-dependent braking casters (SH +3 cm)
- Partial foot ring

STANDARD

FEMB level:2017 (Level 3)

GS-zertifiziert gem. DIN EN 1729-1, DIN EN 1729-2

LOAD CAPACITY

125 kg

SIZES

SIZE	3-5
CHAIR WIDTH	54 cm
CHAIR HEIGHT	65-76 cm
SEAT HEIGHT	34-45 cm
CHAIR DEPTH	54 cm
STACKABILITY	-
WEIGHT	9 kg

Our range of materials and colors can be found in the A2S material overview.

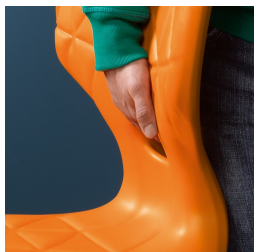


A2S-Furnishing Systems Ltd.
ASS-Einrichtungssysteme GmbH
info@a2s.com
WWW.A2S.COM

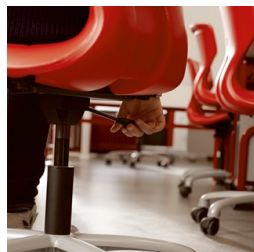
FLEX GAS LIFT SWIVEL CHAIR MODEL 7876



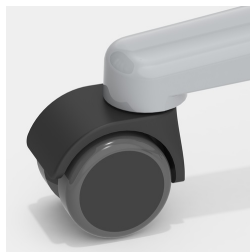
BENEFITS/SPECIALS



Easy to carry due to low weight



Height adjustment by safety
gas spring



Optionally with load-
dependent braked casters



Optionally with partial foot ring



Seat shell with integrated
ventilation channel



Extremely robust aluminum
base