



STANDARD VERSION

Material made of 3-layer chipboard (E1), melamine coated, with 2 mm plastic edge, material thickness 19 mm. Back panel thickness 8 mm. Rounded aluminum profile corners.

Single-leaf functional doors at front and rear, including vertical handle bar with roller support, lockable. Cabinet mobile on 4 swivel casters, 2 of which have total brakes.

Standard with 16 small Tidy Boxes. Cabinet mobile on 4 swivel casters, 2 with brakes.

The color assortment for the Tidy Boxes can be selected as desired. Please specify when ordering.

Standard with 12 small Tidy Boxes. Single-leaf functional doors front and rear, including vertical handle bar with roller support, lockable. Cabinet mobile on 4 swivel casters, 2 with total brakes.

OPTIONS

- Decoration group 2
- Back wall covered with cork
- Front decors price group 2
- Front white, writable

STANDARD

FEMB level:2017 (Level 3)

DIN EN 14074, DIN EN 14073-2, DIN EN 14073-3, DIN EN 16121, DIN EN 16122

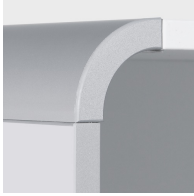
TECHNICAL SPECIFICATIONS

WIDTH	104 cm	138 cm	104 cm
TOTAL HEIGHT	164 cm	100 cm	164 cm
DEPTH	60 cm	49 cm	60 cm
NO. OF ADJUSTABLE SHELVES	3		2
NO. OF FIXED SHELVES		1	1
WEIGHT	105 kg	80 kg	136 kg

BENEFITS/SPECIALS



Board material melamine coated with robust plastic edge



Rounded aluminum profile corners



Mobile on 4 castors, 2 of which are lockable



Metal cup hinges with 240° opening angle



Pull-out proof shelf supports



Tidy boxes for storing gloves, hats etc.