

# TOP SHELF, WITH CENTER PANEL FOR MULTIFUNCTIONAL BOARD SYSTEM MODEL 4731.900



## STANDARD VERSION

Body, 3-layer particle board (E1), melamine coated, highly abrasion-resistant, with 1 mm plastic edge, thickness 19 mm.  
Rear panel, 3-layer chipboard (E1), melamine-coated, highly abrasion-resistant, grooved all around, thickness 8 mm.  
Back panel, 3-layer chipboard (E1), melamine coated, highly abrasion-resistant, grooved all around, thickness 8 mm.  
With possibility to attach the aluminum guide rail for multifunctional panel system.  
With center panel.

## OPTIONS

- Decoration group 2
- Shelf (additional)

## STANDARD

FEMB level:2017 (Level 3)

## TECHNICAL SPECIFICATIONS

WIDTH	100 cm
TOTAL HEIGHT	87/128 cm
DEPTH	36/42/48/52/58 cm
NO. OF ADJUSTABLE SHELVES	4
WEIGHT	60 kg

Our range of materials and colors can be found in the A2S material overview.



A2S-Furnishing Systems Ltd.  
ASS-Einrichtungssysteme GmbH  
info@a2s.com  
WWW.A2S.COM

# TOP SHELF, WITH CENTER PANEL FOR MULTIFUNCTIONAL BOARD SYSTEM MODEL 4731.900



## BENEFITS/SPECIALS



Board material melamine coated with robust plastic edge



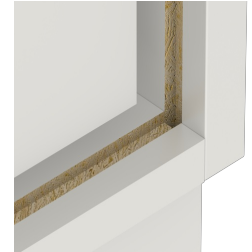
Sliding panel with aluminum guide rails and additional storage space behind the panels



Shelf attachment with tidy boxes behind the panels



Pull-out proof shelf supports



Resistance to warping due to 8 mm thick back wall



Carcass firmly doweled and glued ex works