

# 4-LEG TABLE, METAL WELDED (130X56 CM) MODEL 1004.302



## STANDARD VERSION

Tabletop, 3-layer chipboard (E1), melamine coated, highly abrasion-resistant, with 3 mm plastic edge, thickness: 25 mm.

**Note:** Table height specifications refer to a tabletop thickness of 25 mm.

4-leg base frame, side parts round tube: 40/2 mm, frame square tube welded and rounded: 40/20/2 mm. Frame epoxy coated, with plastic floor protector with level compensation.

Table top shape: 60° trapezoidal

## OPTIONS

- Table top finishes price group 2
- Tabletop with ASSODUR® edge
- Table top HPL glued
- Table top compact board 12 mm
- Felt floor protectors
- Teflon floor protector
- Fixed castor
- Table frame chrome plated
- Height adjustment 3-7
- Cable slack
- Cable clamp Ø 38-40 mm
- 6-fold gounded socket

## STANDARD

GS-zertifiziert gem. DIN EN 1729-1, DIN EN 1729-2, DIN EN 15372

FEMB level:2017 (Level 3)

## SIZES

SIZE	3	4	5	6	7	72 cm	75 cm
TABLE WIDTH	130 cm	130 cm	130 cm	130 cm	130 cm	130 cm	130 cm
TABLE HEIGHT	58 cm	64 cm	70 cm	76 cm	82 cm	72 cm	75 cm
TABLE DEPTH	56 cm	56 cm	56 cm	56 cm	56 cm	56 cm	56 cm
ADJUSTMENT	65 cm	65 cm	65 cm	65 cm	65 cm	65 cm	65 cm
DIMENSION							
STACKABILITY	-	-	-	-	-	-	-
NUMBER OF SEATS	2	2	2	2	2	2	2
WEIGHT	18 kg	19 kg	19 kg	20 kg	21 kg	20 kg	20 kg

Our range of materials and colors can be found in the A2S material overview.



A2S-Furnishing Systems Ltd.  
ASS-Einrichtungssysteme GmbH  
info@a2s.com  
WWW.A2S.COM

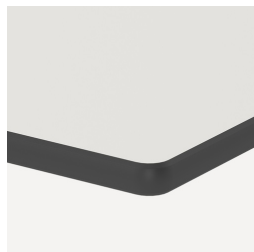
# 4-LEG TABLE, METAL WELDED (130X56 CM) MODEL 1004.302



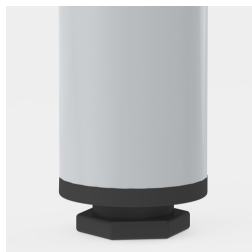
## BENEFITS/SPECIALS



Melamine coated table top with robust plastic edge



Optional compact board as table top



Floor saver with level compensation compensates for uneven floors



Optional frame mobile by means of 2 fixed castors



Optional melamine coated table top with ASSODUR® edge