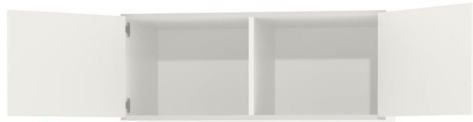


DOUBLE DOOR CABINET (D 44 CM) MODEL 4225.910



STANDARD VERSION

Body, 3-layer particle board (E1), melamine coated, highly abrasion-resistant, with 1 mm plastic edge, thickness 19 mm.
Rear panel, 3-layer chipboard (E1), melamine-coated, highly abrasion-resistant, grooved all around, thickness 8 mm.
Back panel, 3-layer chipboard (E1), melamine coated, highly abrasion-resistant, grooved all around, thickness 8 mm.
Doors, 3-layer particle board (E1), melamine coated, highly abrasion resistant, with 2 mm plastic edge, thickness 19 mm.
Arch handle chrome matt

Note: 1 folder height (OH) \triangleq 38.4 cm

OPTIONS

- Decoration group 2
- Front HPL glued
- Handle PG 2
- Front decors price group 2
- Shelf (additional)
- Lock with pin cylinder change core

STANDARD

DIN EN 14074, DIN EN 14073-2, DIN EN 14073-3, DIN EN 16121, DIN EN 16122

FEMB level:2017 (Level 3)

TECHNICAL SPECIFICATIONS

FOLDER HEIGHT	1
WIDTH	100 cm
HEIGHT OF TOP CABINET	40 cm
HEIGHT OF COMBI TOP CABINET	38 cm
DEPTH	44 cm
NO. OF ADJUSTABLE SHELVES	0
WEIGHT	30 kg

Our range of materials and colors can be found in the A2S material overview.



A2S-Furnishing Systems Ltd.
ASS-Einrichtungssysteme GmbH
info@a2s.com
WWW.A2S.COM

DOUBLE DOOR CABINET (D 44 CM) MODEL 4225.910



BENEFITS/SPECIALS



Board material melamine coated with robust plastic edge



1 OH cabinet with handle or lock



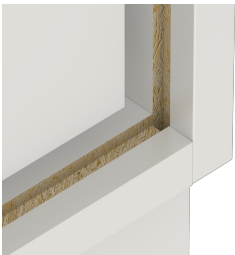
Metal cup hinges with 240° opening angle



Pull-out proof shelf supports



Carcass firmly doweled and glued ex works



Resistance to warping due to 8 mm thick back wall