



## STANDARD VERSION

Body, 3-layer particle board (E1), melamine coated, highly abrasion-resistant, with 1 mm plastic edge, thickness 19 mm.  
 Rear panel, 3-layer chipboard (E1), melamine-coated, highly abrasion-resistant, grooved all around, thickness 8 mm.  
 Back panel, 3-layer chipboard (E1), melamine coated, highly abrasion-resistant, grooved all around, thickness 8 mm.  
 Drawer front made of 3-layer chipboard (E1), melamine coated, highly abrasion-resistant, with 2 mm plastic edge, thickness: 19 mm. Full-extension runner with retraction damping. Lockable, security lock with exchangeable cylinder (for 1 OH either lock or handle).  
 Cabinet including base.

## OPTIONS

- Decoration group 2
- Front decors price group 2
- Handle PG 2
- Base adjustment
- Steel base (chrome silver 9006)

## STANDARD

DIN EN 14074, DIN EN 14073-2, DIN EN 14073-3, DIN EN 16121, DIN EN 16122

FEMB level:2017 (Level 3)

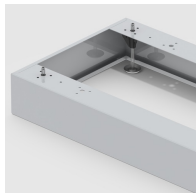
## TECHNICAL SPECIFICATIONS

<b>FOLDER HEIGHT</b>	2
<b>WIDTH</b>	100 cm
<b>TOTAL HEIGHT</b>	89 cm
<b>DEPTH</b>	42 cm
<b>WEIGHT</b>	77 kg

## BENEFITS/SPECIALS



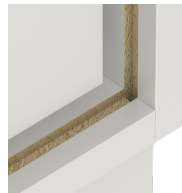
Board material melamine coated with robust plastic edge



Optionally with robust steel base



Smooth-running drawers with roller bearings and soft-closing mechanism



Resistance to warping due to 8 mm thick back wall



Carcass firmly doweled and glued ex works