

# STACKING TROLLEY FOR FOLDING TABLES, 120 X 70 CM TO 160 X 80 CM

MODEL 3899.147



## STANDARD VERSION

Strong frame with 2 large swivel castors and 2 large fixed castors in front, chrome silver 9006, max. load 10 tables.  
Cover plate, 3-layer chipboard (E1), melamine coated, highly abrasion-resistant, with 3 mm plastic edge, thickness: 19 mm.

## OPTIONS

## TECHNICAL SPECIFICATIONS

WIDTH	152 cm
HEIGHT	97 cm
DEPTH	71 cm
WEIGHT	40 kg

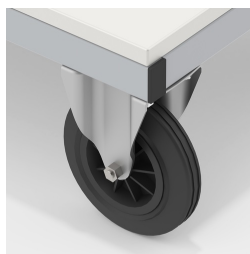
## BENEFITS/SPECIALS



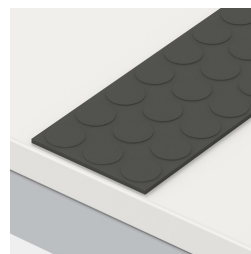
Board material melamine coated with robust plastic edge



Maximum load 10 tables



Smooth-running, heavy-duty hard rubber casters, steerable on one side with stop



Abrasion resistant slip stop with knobs



Proven many times in open plan and canteen

Our range of materials and colors can be found in the A2S material overview.



A2S-Furnishing Systems Ltd.  
ASS-Einrichtungssysteme GmbH  
info@a2s.com  
WWW.A2S.COM