

FLEXLAB TRANSPORT CADDY WITH TOP PLATE MODEL 4131.004



STANDARD VERSION

4 swivel castors, 2 with total brakes.

Decor in in U023.

Storage compartment open at the top, space for up to 9 small tidy boxes at the bottom.

Side support strip and locking mechanism for top panel made of compressed fiberboard with black core, thickness: 16 mm, underside with cut-outs for form-fit connection with 2 FLEXLAB transport caddies.

OPTIONS

TECHNICAL SPECIFICATIONS

WIDTH	38 cm
TOTAL HEIGHT	105 cm
DEPTH	52 cm
WEIGHT	34 kg

Our range of materials and colors can be found in the A2S material overview.



Management System
ISO 14001:2015
ISO 9001:2015
www.a2s.com
© 2018/09/2013



A2S-Furnishing Systems Ltd.
ASS-Einrichtungssysteme GmbH
info@a2s.com
WWW.A2S.COM

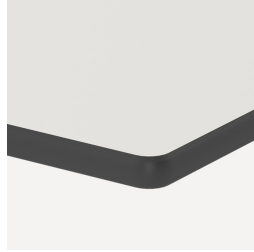
FLEXLAB TRANSPORT CADDY WITH TOP PLATE MODEL 4131.004



BENEFITS/SPECIALS



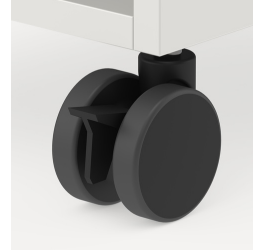
Board material melamine coated with robust plastic edge



Robuste und widerstandsfähige CDF-Platte



Tidy boxes for storing gloves, hats etc.



Mobilität durch 4 stabilen Rollen, davon 2 feststellbar



Verriegelung für Aufsatzplatte



Zusätzliche Arbeitsfläche durch Aufsatzplatte