

# BASE CABINET, MULTIFUNCTIONAL BOARD SYSTEM, WITH TIDY BOXES AND DOORS (W 105 CM)

MODEL 4011.621



## STANDARD VERSION

Body, 3-layer particle board (E1), melamine coated, highly abrasion-resistant, with 1 mm plastic edge, thickness 19 mm.

Rear panel, 3-layer chipboard (E1), melamine-coated, highly abrasion-resistant, grooved all around, thickness 8 mm.

Back panel, 3-layer chipboard (E1), melamine coated, highly abrasion-resistant, grooved all around, thickness 8 mm.

Base unit for multifunctional sliding shelving system, matching the shelf units with Tidy Boxes 4740.070/4741.104

The color assortment for the Tidy Boxes can be selected as desired. Please specify when ordering.

Cabinet including base.

Material body, base and doors made of 3-layer chipboard (E1), melamine coated, material thickness 19 mm. Body and shelves with 1 mm plastic edge, doors with 2 mm plastic edge.

## OPTIONS

- Decoration group 2
- Front decors price group 2
- Base adjustment
- Steel base (chrome silver 9006)

## STANDARD

FEMB level:2017 (Level 3)

GS zertifiziert gem. DIN EN 16121:2024-04

## TECHNICAL SPECIFICATIONS

WIDTH	105 cm
TOTAL HEIGHT	76 cm
DEPTH	50 cm

Our range of materials and colors can be found in the A2S material overview.



A2S-Furnishing Systems Ltd.  
ASS-Einrichtungssysteme GmbH  
info@a2s.com  
WWW.A2S.COM

# BASE CABINET, MULTIFUNCTIONAL BOARD SYSTEM, WITH TIDY BOXES AND DOORS (W 105 CM)

MODEL 4011.621



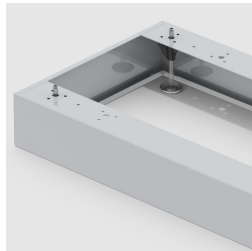
## BENEFITS/SPECIALS



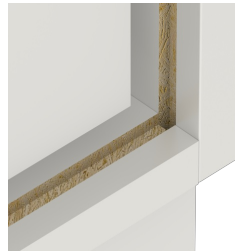
Board material melamine  
coated with robust plastic edge



Tidy boxes for storing gloves,  
hats etc.



Optionally with robust steel  
base



Resistance to warping due to 8  
mm thick back wall



Carcass firmly doweled and  
glued ex works