

GAS LIFT SWIVEL CHAIR WITH FOOT RING

MODEL 8385.002



STANDARD VERSION

PAGHOLZ® waisted shell, with ergonomic three-dimensional shell shape. Surface melamine coated and pore sealed with a scratch, impact and abrasion resistant finish created in the pressing process. Seat and back surface with pressed-in texture. Aluminum 5-star base, with infinitely variable gas lift height adjustment. Round tubular column: 1.97", epoxy coated. Version with elevation and height-adjustable foot ring, chrome-plated. With plastic feet. Distance seat floor 495 - 709 mm

OPTIONS

- PAGHOLZ® Color Wood - Price group 2
- PAGHOLZ® COLOUR WOOD
- Handle hole
- Seat upholstery price group 1 (size 6E, 7)
- Backrest upholstery price group 1 (size 6E, 7)
- Seat upholstery price group 2 (size 6E, 7)
- Back upholstery price group 2 (size 6E, 7)
- Seat upholstery price group 3 (size 6E, 7)
- Backrest upholstery price group 3 (size 6E, 7)
- Seat upholstery price group 4 (size 6E, 7)
- Backrest upholstery price group 4 (size 6E, 7)
- Felt floor protectors
- Load-dependent braking casters (SH +1.18")
- Locking casters (SH +1.18")
- Polished aluminum base

STANDARD

FEMB level:2017 (Level 3)

DIN EN 1729-1, DIN EN 1729-2, DIN EN 16139

GS-zertifiziert gem. DIN EN 1729-1, DIN EN 1729-2

LOAD CAPACITY

276 lb

SIZES

SIZE	5-7
CHAIR WIDTH	24.80 "
CHAIR HEIGHT	29.92-37.80 "
SEAT HEIGHT	18.11-25.98 "
CHAIR DEPTH	24.80 "
STACKABILITY	-
WEIGHT	18 lb

Our range of materials and colors can be found in the A2S material overview.



A2S-Furnishing Systems Ltd.
ASS-Einrichtungssysteme GmbH
info@a2s.com
WWW.A2S.COM

GAS LIFT SWIVEL CHAIR WITH FOOT RING MODEL 8385.002



BENEFITS/SPECIALS



PAGHOLZ® from sustainable forestry



Optionally with grip hole, round or oval



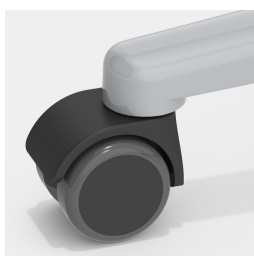
Robust aluminum base with elevation and chrome-plated foot ring, height adjustable



Height adjustment by safety gas spring



Optionally with seat and backrest upholstery (only sizes 6E, 7)



Optionally with load-dependent braked casters



Indestructible PAGHOLZ® shell, scratch, break and impact resistant; flame retardant



Ergonomically and orthopedically adapted shell shape

FABRIC PROPERTIES

INTENSIVE Price group 1

100% polyester | flame retardant according to EN 1021 1&2 | 8.82 oz/y² +/-5% | 100,000 Martindale tours | linting 5 | ÖKO-Tex 100

SKANDIA Price group 1

100% polyester | flame retardant according to EN 1021 1 | 8.64 oz/y² +/-5% | 70,000 Martindale tours | linting 4-5 | ÖKO-Tex 100

FLEECE Price group 1

100% polyester | flame retardant BS 5852:Part1:1979 (cigarette) | 14.18 oz/y² | 100,000 Martindale tours | linting 4 | ÖKO-Tex 100

TAFF B1 Price group 2

100% polyester | flame retardant according to EN 1021 1&2, DIN 4102 B1 | 9.17 oz/y² +/-5% | 70,000 Martindale tours | linting 5 | ÖKO-Tex 100

WOOL Price group 3

100% wool | flame retardant according to EN 1021 1&2 | 16.23 oz/y² +/-5% | 35,000 Martindale tours | linting 4 | tested for harmful substances

PROTEX Price group 3

surface 100% vinyl / fabric 100% polyester | flame retardant according to EN 1021 1&2, DIN 4102 B2 | 24.16 oz/y² | 300,000 Martindale tours | no linting | wipeable with soap and water, water repellent, antibacterial, anti-static, stain resistant, resistant to blood and urine, mold resistant backing and surface, resistant to disinfectants

ARTIFICIAL LEATHER Price group 3

surface 100% polyurethane/ fabric 65% polyester, 35% cotton | flame retardant according to EN 1021-1 | 15.34 oz/y² +/-10% | 100,000 Martindale tours | no linting | tested for harmful substances

ARTIFICIAL LEATHER B1 Price group 4

85% PVC compound, 15% cotton knit | flame retardant according to EN 1021 1&2, DIN 4102 B1 | weight 27.51 +/-1.76 oz/y² | 75,000 Martindale tours | no linting | tested for harmful substances | resistant to blood and urine, resistant to disinfectants