

# WOODMARK SWIVEL SPINDLE CHAIR WITH CASTERS MODEL 7960



## STANDARD VERSION

Seat and back separate and shaped to fit the body. Made of multiplex, surface melamine coated and pore sealed with a scratch, impact and abrasion resistant finish produced in the pressing process.  
In beech D334 as standard. Seat surface with pressed-in, anti-slip knobs. Edges softly rounded.  
Steel 5-star base, infinitely variable height adjustment by concealed steel swivel spindle with anti-rotation device. Round tubular column: 1.97", epoxy coated. Load-dependent braked casters with step protection.

## OPTIONS

- WOODMARK maple D033 or gray white U023
- Seat and back color stained
- Seat and back riveted

## STANDARD

FEMB level:2017 (Level 3)

DIN EN 1729-1, DIN EN 1729-2

## LOAD CAPACITY

276 lb

## SIZES

SIZE	5-7
CHAIR WIDTH	22.44 "
CHAIR HEIGHT	29.92-37.01 "
SEAT HEIGHT	16.14-23.23 "
CHAIR DEPTH	22.44 "
STACKABILITY	-
WEIGHT	21 lb

Our range of materials and colors can be found in the A2S material overview.



A2S-Furnishing Systems Ltd.  
ASS-Einrichtungssysteme GmbH  
info@a2s.com  
WWW.A2S.COM

# WOODMARK SWIVEL SPINDLE CHAIR WITH CASTERS MODEL 7960



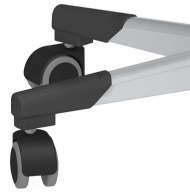
## BENEFITS/SPECIALS



Seat surface with pressed-in, anti-slip knobs



Seat and back concealed screwed



Optional swivel spindle base with rubberized double casters



Seat and back melamine coated: scratch, break and impact resistant; flame retardant