

FOLDING SLIDING BOARD, FOR FLOOR/WALL MOUNTING, GREEN STEEL (78.74"X59.06")

MODEL 6840211



STANDARD VERSION

Writing surface enamelled and magnetic steel, glued to support plate. Edges with natural anodized aluminum profiles and rounded plastic corners. Edging glued waterproof. Board includes marker tray. With stable, continuous sliding frame for floor/wall mounting.

OPTIONS

- Picture strip
- Picture clamp
- Blackboard eraser
- Eraser Felt
- Holder for whiteboard pens
- Whiteboard pen
- Magnets Ø 1.18"
- Power magnets Ø 1.42"
- Drawing tool set, 4 pieces
- Drawing tool set, 4 pieces
- Drawing tool set, 6 pieces
- Floor mounting
- Mobile
- Freestanding
- Rulings 01/ 02/ 03/ 04/ 05/ 07/ 08/ 10/ 11/ 12/ 15

TECHNICAL SPECIFICATIONS

WIDTH	78.74 "
HEIGHT	59.06 "
NO. OF WRITING SURFACES	5
WEIGHT	520 lb
VERSION	hinged side panels, adjustable in height, floor and wall mounted

Our range of materials and colors can be found in the A2S material overview.



A2S-Furnishing Systems Ltd.
ASS-Einrichtungssysteme GmbH
info@a2s.com
WWW.A2S.COM

FOLDING SLIDING BOARD, FOR FLOOR/WALL MOUNTING, GREEN STEEL (78.74"X59.06") MODEL 6840211



BENEFITS/SPECIALS



Maintenance-free, low-noise precision guidance on 8 ball-bearing track rollers



Panel wings can be folded out at 180° angle



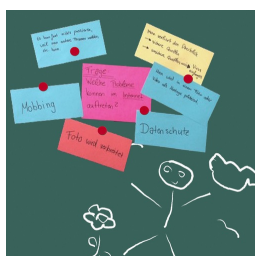
Edge protection due to rounded safety corners



Matching shelf for chalk and pens



Eraser and pen tray included



Magnetic surface can be written on with chalk