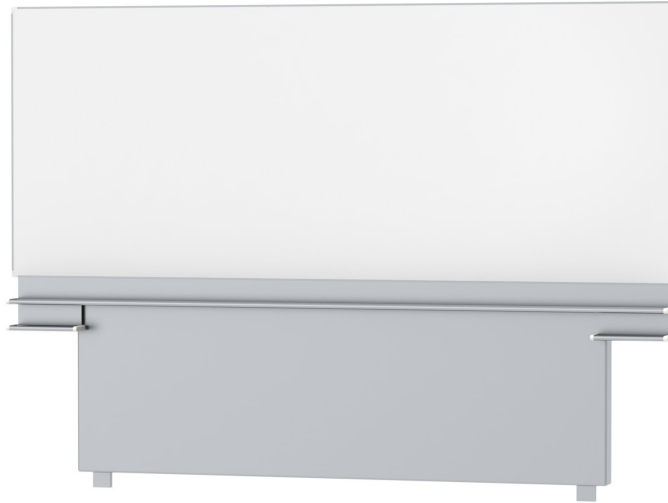


SINGLE-SURFACE SLIDING BOARD, FOR FLOOR/WALL MOUNTING, WHITE STEEL (118.11"X47.24")

MODEL 6843310



STANDARD VERSION

Writing surface enamelled and magnetic steel, glued to support plate. Edges with natural anodized aluminum profiles and rounded plastic corners. Edging glued waterproof. Board includes marker tray. With stable, continuous sliding frame for floor/wall mounting.

OPTIONS

- Picture strip
- Picture clamp
- Blackboard eraser
- Eraser Felt
- Holder for whiteboard pens
- Whiteboard pen
- Magnets Ø 1.18"
- Power magnets Ø 1.42"
- Drawing tool set, 4 pieces
- Drawing tool set, 4 pieces
- Drawing tool set, 6 pieces
- Floor mounting
- Mobile
- Freestanding
- Rulings 01/ 02/ 03/ 04/ 05/ 08/ 10/ 11/ 12/ 15

TECHNICAL SPECIFICATIONS

WIDTH	118.11 "
HEIGHT	47.24 "
NO. OF WRITING SURFACES	1
WEIGHT	273 lb
VERSION	adjustable in height, floor and wall mounted

Our range of materials and colors can be found in the A2S material overview.



**MADE
IN
GERMANY**

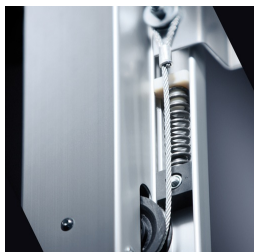
A2S-Furnishing Systems Ltd.
ASS-Einrichtungssysteme GmbH
info@a2s.com
WWW.A2S.COM

SINGLE-SURFACE SLIDING BOARD, FOR FLOOR/WALL MOUNTING, WHITE STEEL (118.11"X47.24")

MODEL 6843310



BENEFITS/SPECIALS



Maintenance-free, low-noise precision guidance on 8 ball-bearing track rollers



Edge protection due to rounded safety corners



Eraser and pen tray included



Magnetic surface can be written on with whiteboard pens