

SCHOOL TABLE, TWO-SEATER (51.18"X25.59") MODEL 9536



STANDARD VERSION

Tabletop, 3-layer chipboard (E1), melamine coated, highly abrasion-resistant, with 0.12" plastic edge, thickness: 0.98".

Note: Table height specifications refer to a tabletop thickness of 0.98".

C-shape double column underframe. Side parts oval tube: 1.57"/0.79"/0.06" and 1.97"/1.18"/0.08", plate support steel angle: 1.18"/1.18"/. Oval tube crossbar: 1.97"/0.79"/0.08", welded in as fascia. Frame epoxy coated, with plastic floor protector.

With satchel hooks on both sides.

With plate support in the middle.

OPTIONS

- Tabletop with ASSODUR® edge
- Table top HPL glued
- Table top glued with solid wood edge glue-in crowned
- Table top WOODMARK, 0.85"
- Table top compact board 0.47"
- Table top Multiplex, 0.79"
- Felt floor protectors
- Glossy, galvanized book basket
- Chair suspension C-shape chairs
- Chair suspension
- Chair suspension PAGHOLZ® sled-base chair
- Chair suspension FLEX GF 5-7 3D rocker
- Chair suspension FLEX GF 3-5 3D rocker
- 1 pair of rails for Tidy Box
- Tidy Box including rails

STANDARD

DIN EN 1729-1, DIN EN 1729-2

FEMB level:2017 (Level 3)

SIZES

SIZE	2	3	4	5	6	7
TABLE WIDTH	51.18 "	51.18 "	51.18 "	51.18 "	51.18 "	51.18 "
TABLE HEIGHT	20.47 "	22.83 "	25.20 "	27.56 "	29.92 "	32.28 "
TABLE DEPTH	25.59 "	25.59 "	25.59 "	25.59 "	25.59 "	25.59 "
STACKABILITY	-	-	-	-	-	-
NUMBER OF SEATS	2	2	2	2	2	2
WEIGHT	40 lb	41 lb	42 lb	43 lb	44 lb	45 lb

Our range of materials and colors can be found in the A2S material overview.



A2S-Furnishing Systems Ltd.
ASS-Einrichtungssysteme GmbH
info@a2s.com
WWW.A2S.COM

SCHOOL TABLE, TWO-SEATER (51.18"X25.59") MODEL 9536



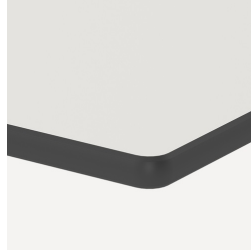
BENEFITS/SPECIALS



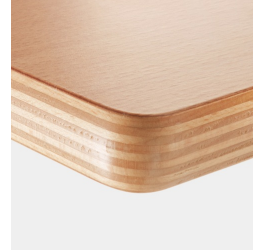
Melamine coated table top with robust plastic edge



Optional melamine coated table top with ASSODUR® edge



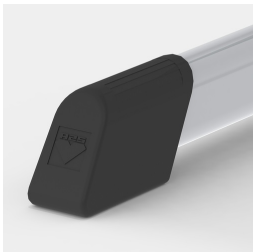
Optional compact board as table top



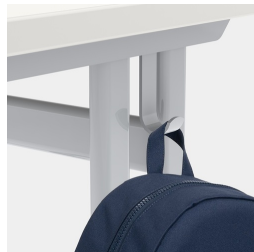
Optional table top multiplex melamine coated



Optional melamine coated table top with solid wood edge



Floor protectors with integrated step protection



Including satchel hooks left and right



Optional WOODMARK table top in shatterproof quality



Due to C-shape no disturbance of the table legs when getting in and out of the table