

# CHANGE CADDY OPEN ON BOTH SIDES MODEL 4130.507



## STANDARD VERSION

Material made of 3-layer chipboard (E1), melamine coated, with 0.08" plastic edge, material thickness 0.75". Back panel thickness 0.31". Rounded aluminum profile corners.

Includes invisible connection system by means of magnets.

2 shelves, in the lower and middle compartment with 1 small and 1 large Tidy Box each. The Tidy Boxes can be removed one from the left and one from the right. Upper and middle compartment at folder height.

The color assortment for the Tidy Boxes can be selected as desired. Please specify when ordering.

## OPTIONS

- Decoration group 2
- Sides glued with magnetic laminate

## STANDARD

FEMB level:2017 (Level 3)

## TECHNICAL SPECIFICATIONS

WIDTH	14.96 "
TOTAL HEIGHT	44.09 "
DEPTH	21.65 "
NO. OF FIXED SHELVES	2
WEIGHT	110 lb

Our range of materials and colors can be found in the A2S material overview.



A2S-Furnishing Systems Ltd.  
ASS-Einrichtungssysteme GmbH  
info@a2s.com  
WWW.A2S.COM

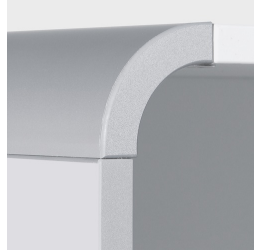
# CHANGE CADDY OPEN ON BOTH SIDES MODEL 4130.507



## BENEFITS/SPECIALS



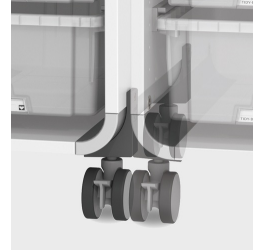
Board material melamine coated with robust plastic edge



Rounded aluminum profile corners



Mobile on 4 castors, 2 of which are lockable



Magnetic linking system



Optionally with magnetic pages



Tidy boxes for storing gloves, hats etc.