



STANDARD VERSION

Body, 3-layer particle board (E1), melamine coated, highly abrasion-resistant, with 1 mm plastic edge, thickness 19 mm.  
Rear panel, 3-layer chipboard (E1), melamine-coated, highly abrasion-resistant, grooved all around, thickness 8 mm.  
Cabinet including base.  
Property cupboard with central wall and compartments.

OPTIONS

- Decoration group 2
- Castors for cabinet base
- Steel base (chrome silver 9006)
- with side handles
- Base adjustment

STANDARD

DIN EN 14074, DIN EN 14073-2, DIN EN 14073-3, DIN EN 16121, DIN EN 16122

FEMB level:2017 (Level 3)

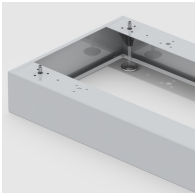
TECHNICAL SPECIFICATIONS

FOLDER HEIGHT	2
WIDTH	54.33 "
TOTAL HEIGHT	35.04 "
DEPTH	18.90 "
INSIDE MEASURE	9.45x25.98x18.11 "
COMPARTMENTS	
NO. OF	6
COMPARTMENTS	
NO. OF FIXED	4
SHELVES	
WEIGHT	141 lb

BENEFITS/SPECIALS



Board material melamine coated with robust plastic edge



Optionally with robust steel base



Mobile on 4 castors, 2 of which are lockable



Resistance to warping due to 8 mm thick back wall



Carcass firmly dowelled and glued ex works