

# CUBBIES

## MODEL 4033.330



### STANDARD VERSION

Body, 3-layer particle board (E1), melamine coated, highly abrasion-resistant, with 1 mm plastic edge, thickness 19 mm.  
Rear panel, 3-layer chipboard (E1), melamine-coated, highly abrasion-resistant, grooved all around, thickness 8 mm.  
Back panel, 3-layer chipboard (E1), melamine coated, highly abrasion-resistant, grooved all around, thickness 8 mm.  
Cabinet including base.  
Shelf with center panel for satchels.

### OPTIONS

- Decoration group 2
- Base adjustment
- with side handles
- Castors for cabinet base
- Steel base (chrome silver 9006)

### STANDARD

FEMB level:2017 (Level 3)

GS-zertifiziert gem. DIN EN 16121:2017-12, DIN EN 16122:2012-10

### TECHNICAL SPECIFICATIONS

WIDTH	40.94 "
TOTAL HEIGHT	69.29 "
DEPTH	18.90 "
INSIDE MEASURE	20.87x12.60x18.11 "
COMPARTMENTS	
NO. OF	9
COMPARTMENTS	
NO. OF FIXED	6
SHELVES	
WEIGHT	126 lb

Our range of materials and colors can be found in the A2S material overview.



A2S-Furnishing Systems Ltd.  
ASS-Einrichtungssysteme GmbH  
info@a2s.com  
WWW.A2S.COM

# CUBBIES

## MODEL 4033.330



### BENEFITS/SPECIALS



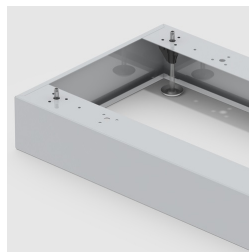
Board material melamine coated with robust plastic edge



Mobile on 4 castors, 2 of which are lockable



Compartments adapted to school satchels.



Optionally with robust steel base



Carcass firmly dowelled and glued ex works