

## STANDARD VERSION

Body, 3-layer particle board (E1), melamine coated, highly abrasion-resistant, with 1 mm plastic edge, thickness 19 mm.  
 Rear panel, 3-layer chipboard (E1), melamine-coated, highly abrasion-resistant, grooved all around, thickness 8 mm.  
 Back panel, 3-layer chipboard (E1), melamine coated, highly abrasion-resistant, grooved all around, thickness 8 mm.  
 Cabinet including base.

## OPTIONS

- Decoration group 2
- with side handles
- Castors for cabinet base
- Shelf (additional)
- Base adjustment
- Steel base (chrome silver 9006)

## STANDARD

FEMB level:2017 (Level 3)

DIN EN 14074, DIN EN 14073-2, DIN EN 14073-3, DIN EN 16121, DIN EN 16122

## TECHNICAL SPECIFICATIONS

<b>FOLDER HEIGHT</b>	2
<b>WIDTH</b>	47.24 "
<b>TOTAL HEIGHT</b>	35.04 "
<b>DEPTH</b>	22.83 "
<b>NO. OF COMPARTMENTS</b>	12
<b>NO. OF ADJUSTABLE SHELVES</b>	8
<b>WEIGHT</b>	168 lb

## BENEFITS/SPECIALS



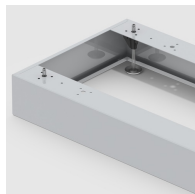
Board material melamine coated with robust plastic edge



Mobile on 4 castors, 2 of which are lockable



Pull-out proof shelf supports



Optionally with robust steel base



Carcass firmly dowelled and glued ex works