

STANDARD VERSION

Body, 3-layer particle board (E1), melamine coated, highly abrasion-resistant, with 1 mm plastic edge, thickness 19 mm.
 Rear panel, 3-layer chipboard (E1), melamine-coated, highly abrasion-resistant, grooved all around, thickness 8 mm.
 Back panel, 3-layer chipboard (E1), melamine coated, highly abrasion-resistant, grooved all around, thickness 8 mm.
 Cabinet including base.

OPTIONS

- Decoration group 2
- with side handles
- Castors for cabinet base
- Shelf (additional)
- Base adjustment
- Steel base (chrome silver 9006)

STANDARD

FEMB level:2017 (Level 3)

DIN EN 14074, DIN EN 14073-2, DIN EN 14073-3, DIN EN 16121, DIN EN 16122

TECHNICAL SPECIFICATIONS

FOLDER HEIGHT	2
WIDTH	47.24 "
TOTAL HEIGHT	35.04 "
DEPTH	22.83 "
NO. OF COMPARTMENTS	16
NO. OF ADJUSTABLE SHELVES	12
WEIGHT	185 lb

BENEFITS/SPECIALS



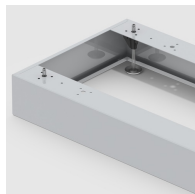
Board material melamine coated with robust plastic edge



Mobile on 4 castors, 2 of which are lockable



Pull-out proof shelf supports



Optionally with robust steel base



Carcass firmly dowelled and glued ex works