

MONO-COLUMN TABLE (35.43"X27.56") MODEL 7616.097



STANDARD VERSION

Tabletop, 3-layer chipboard (E1), melamine coated, highly abrasion-resistant, with 0.12" plastic edge, thickness: 0.98".

Note: Table height specifications refer to a tabletop thickness of 0.98".

Table mounting plate, steel: 0.12".

Table column, pneumatic height adjustment, square: 2.64" x 2.64". Height adjustment by means of safety hand release under the table top. Table column powder coated.

4-star powder coated base, with 4 double swivel locking casters with rubber coating.

Table top shape: barrel-shaped

OPTIONS

- Table top finishes price group 2
- Table top compact board 0.47"
- Front panel made of perforated steel plate
- Table top HPL glued
- Safe deposit drawer lockable

STANDARD

GS-zertifiziert gem. DIN EN 15372

FEMB level:2017 (Level 3)

SIZES

TABLE WIDTH	35.43 "
TABLE HEIGHT	27.56-43.31 "
TABLE DEPTH	27.56 "
STACKABILITY	-
NUMBER OF SEATS	1
WEIGHT	42 lb

Our range of materials and colors can be found in the A2S material overview.



A2S-Furnishing Systems Ltd.
ASS-Einrichtungssysteme GmbH
info@a2s.com
WWW.A2S.COM

MONO-COLUMN TABLE (35.43"X27.56") MODEL 7616.097



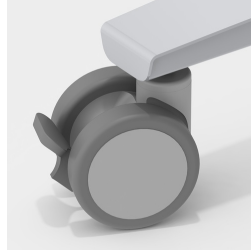
BENEFITS/SPECIALS



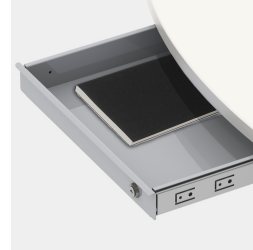
Melamine coated table top with robust plastic edge



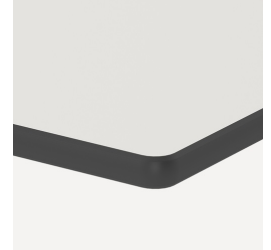
Safety hand release prevents unintentional triggering of height adjustment



Including 4 robust double swivel casters with total locking device



Optionally with lockable steel valuables drawer



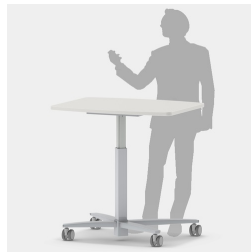
Optional compact board as table top



Perforated plate front panel included



Infinitely variable height adjustment in the range 27.56"-43.31"



Can also be used as a mobile lectern