

# MONO-COLUMN TABLE, HEIGHT-ADJUSTABLE (W 51.18"/D 31.50") OVAL

## MODEL 7607.138



### STANDARD VERSION

Tabletop, 3-layer chipboard (E1), melamine coated, highly abrasion-resistant, with 0.12" plastic edge, thickness: 0.98".

**Note:** Table height specifications refer to a tabletop thickness of 0.98".

Table mounting plate, steel: 0.12".

Table column, pneumatic height adjustment, square: 2.64" x 2.64". Height adjustment by means of safety hand release under the table top. Table column powder coated.

4-star powder coated base, with 4 double swivel locking casters with rubber coating.

Crossbar made of rectangular tube: 1.57"/0.79"/0.08".

Table top shape: oval

### OPTIONS

- Table top finishes price group 2
- Table top compact board 0.47"
- Front panel made of perforated steel plate
- Table top HPL glued
- Safe deposit drawer lockable

### STANDARD

GS-zertifiziert gem. DIN EN 15372

FEMB level:2017 (Level 3)

### SIZES

TABLE WIDTH	51.18 "
TABLE HEIGHT	27.95-43.70 "
TABLE DEPTH	31.50 "
STACKABILITY	-
NUMBER OF SEATS	1
WEIGHT	69 lb

Our range of materials and colors can be found in the A2S material overview.



A2S-Furnishing Systems Ltd.  
 ASS-Einrichtungssysteme GmbH  
 info@a2s.com  
 WWW.A2S.COM

# MONO-COLUMN TABLE, HEIGHT-ADJUSTABLE (W 51.18"/D 31.50") OVAL MODEL 7607.138



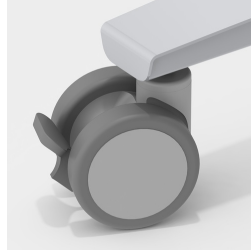
## BENEFITS/SPECIALS



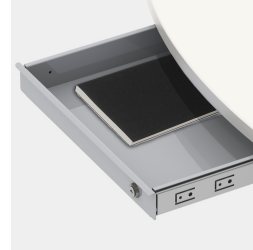
Melamine coated table top with robust plastic edge



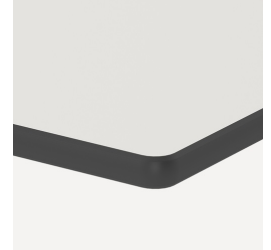
Safety hand release prevents unintentional triggering of height adjustment



Including 4 robust double swivel casters with total locking device



Optionally with lockable steel valuables drawer



Optional compact board as table top



Front panel made of perforated metal included



Infinitely height adjustable in the range 27.56"-43.31"



Can also be used as a mobile lectern