

4-LEG TABLE, METAL WELDED (120X60 CM) MODEL 1001.126



STANDARD VERSION

Tabletop, 3-layer chipboard (E1), melamine coated, highly abrasion-resistant, with 0.12" plastic edge, thickness: 0.98".

Note: Table height specifications refer to a tabletop thickness of 0.98".

4-leg base frame, side parts round tube: 40/2 mm, frame square tube welded and rounded: 40/20/2 mm. Frame epoxy coated, with plastic floor protector with level compensation.

Table top shape: rectangular

ATTENTION: Observe chair frame width!

OPTIONS

- Table top finishes price group 2
- Tabletop with ASSODUR® edge
- Table top HPL glued
- Table top compact board 0.47"
- Table top with 40 mm corner radius
- Cable opening, Ø 3.15"
- Cable opening, Ø 3.54"
- Mesh cable duct
- Felt floor protectors
- Teflon floor protector
- Fixed castor
- Table frame chrome plated
- Height adjustment 3-7
- CPU holder
- Insert plate for CPU holder
- Cable slack
- Cable clamp Ø 38-40 mm
- 6-fold gounded socket

STANDARD

GS-zertifiziert gem. DIN EN 1729-1, DIN EN 1729-2, DIN EN 15372

FEMB level:2017 (Level 3)

SIZES

SIZE	3	4	5	6	7	72 cm	75 cm
TABLE WIDTH	47.24 "	47.24 "	47.24 "	47.24 "	47.24 "	47.24 "	47.24 "
TABLE HEIGHT	22.83 "	25.20 "	27.56 "	29.92 "	32.28 "	28.35 "	29.53 "
TABLE DEPTH	23.62 "	23.62 "	23.62 "	23.62 "	23.62 "	23.62 "	23.62 "
STACKABILITY	-	-	-	-	-	-	-
NUMBER OF SEATS	2	2	1	2	2	2	2
WEIGHT	44 lb	45 lb	46 lb	49 lb	50 lb	47 lb	49 lb

Our range of materials and colors can be found in the A2S material overview.



A2S-Furnishing Systems Ltd.
ASS-Einrichtungssysteme GmbH
info@a2s.com
WWW.A2S.COM

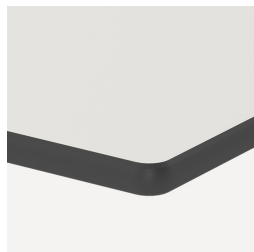
4-LEG TABLE, METAL WELDED (120X60 CM) MODEL 1001.126



BENEFITS/SPECIALS



Melamine coated table top with robust plastic edge



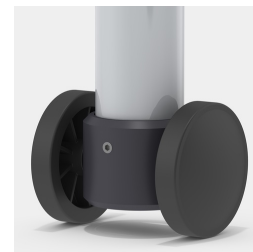
Optional compact board as table top



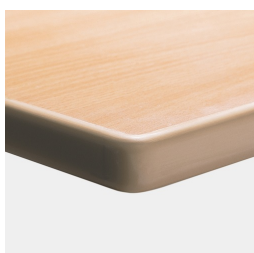
Optional table top with 40 mm corner radius



Floor saver with level compensation compensates for uneven floors



Optional frame mobile by means of 2 fixed castors



Optional melamine coated table top with ASSODUR® edge