

MODULA TABLE STRAIGHT (69X42 CM) MODEL 3130.064



STANDARD VERSION

Body and shelf, 3-layer chipboard (E1), melamine coated, with 2 mm plastic edge, thickness: 19 mm. Carcass firmly glued on miter. Incl. chrome-plated footrest. Floor protector with level compensation.

OPTIONS

STANDARD

GS-zertifiziert gem. DIN EN 16139, DIN EN 1023-1, DIN EN 1023-2, DIN EN 16121, DIN EN 15372

SIZES

TABLE WIDTH	27.17 "
TABLE HEIGHT	43.31 "
TABLE DEPTH	16.54 "
STACKABILITY	-
NUMBER OF SEATS	1
WEIGHT	62 lb

Our range of materials and colors can be found in the A2S material overview.



A2S-Furnishing Systems Ltd.
ASS-Einrichtungssysteme GmbH
info@a2s.com
WWW.A2S.COM

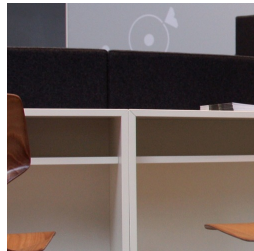
MODULA TABLE STRAIGHT (69X42 CM) MODEL 3130.064



BENEFITS/SPECIALS



Includes footrest for comfortable resting of the feet.



Carcass mitered tightly glued