

# HINGED DOOR CABINET (D 60 CM)

## MODEL 4402.220



### STANDARD VERSION

Body, 3-layer particle board (E1), melamine coated, highly abrasion-resistant, with 1 mm plastic edge, thickness 19 mm.  
 Rear panel, 3-layer chipboard (E1), melamine-coated, highly abrasion-resistant, grooved all around, thickness 8 mm.  
 Back panel, 3-layer chipboard (E1), melamine coated, highly abrasion-resistant, grooved all around, thickness 8 mm.  
 Doors, 3-layer particle board (E1), melamine coated, highly abrasion resistant, with 2 mm plastic edge, thickness 19 mm.  
 Arch handle chrome matt  
**Note:** 1 folder height (OH)  $\pm$  38.4 cm  
 Cabinet including base.

### OPTIONS

- Decoration group 2
- Front decors price group 2
- Front HPL glued
- Castors for cabinet base
- Shelf (additional)
- Handle PG 2
- Base adjustment
- Steel base (chrome silver 9006)

### STANDARD

DIN EN 14074, DIN EN 14073-2, DIN EN 14073-3, DIN EN 16121, DIN EN 16122

FEMB level:2017 (Level 3)

### TECHNICAL SPECIFICATIONS

FOLDER HEIGHT	2
WIDTH	16.14 "
TOTAL HEIGHT	35.04 "
HEIGHT OF COMBI	30.31 "
TOP CABINET	
DEPTH	23.62 "
NO. OF	2
COMPARTMENTS	
NO. OF ADJUSTABLE	1
SHELVES	
WEIGHT	68 lb

Our range of materials and colors can be found in the A2S material overview.



A2S-Furnishing Systems Ltd.  
 ASS-Einrichtungssysteme GmbH  
 info@a2s.com  
 WWW.A2S.COM

# HINGED DOOR CABINET (D 60 CM) MODEL 4402.220



## BENEFITS/SPECIALS



Board material melamine  
coated with robust plastic edge



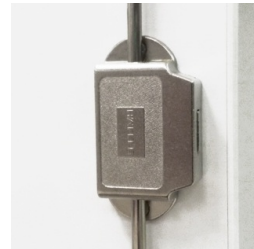
1 OH cabinet with handle or  
lock



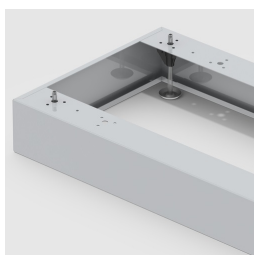
Metal cup hinges with 240°  
opening angle



Pull-out proof shelf supports



High quality locking bar



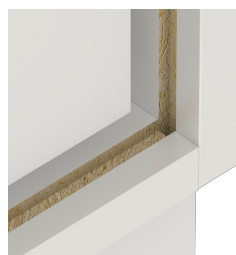
Optionally with robust steel  
base



Mobile on 4 castors, 2 of which  
are lockable



Carcass firmly dowelled and  
glued ex works



Resistance to warping due to 8  
mm thick back wall