



Body, 3-layer particle board (E1), melamine coated, highly abrasion-resistant, with 1 mm plastic edge, thickness 19 mm.  
Rear panel, 3-layer chipboard (E1), melamine-coated, highly abrasion-resistant, grooved all around, thickness 8 mm.  
Back panel, 3-layer chipboard (E1), melamine coated, highly abrasion-resistant, grooved all around, thickness 8 mm.  
Doors, 3-layer particle board (E1), melamine coated, highly abrasion resistant, with 2 mm plastic edge, thickness 19 mm.  
Arch handle chrome matt

## OPTIONS

- ## STANDARD

FEMB level:2017 (Level 3)

## TECHNICAL SPECIFICATIONS

<b>FOLDER HEIGHT</b>	3
<b>WIDTH</b>	47.24 "
<b>TOTAL HEIGHT</b>	50.00 "
<b>HEIGHT OF COMBI</b>	45.28 "
<b>TOP CABINET</b>	
<b>DEPTH</b>	17.32 "
<b>NO. OF</b>	6
<b>COMPARTMENTS</b>	
<b>NO. OF</b>	4
<b>ADJUSTABLE</b>	
<b>SHELVES</b>	
<b>WEIGHT</b>	174 lb

BENEFITS/SPECIALS



Board material melamine coated with robust plastic edge



1 OH cabinet with handle or lock



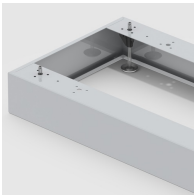
Metal cup hinges with 240° opening angle



Pull-out proof shelf supports



High quality locking bar



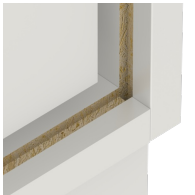
Optionally with robust steel base



Mobile on 4 castors, 2 of which are lockable



Carcass firmly dowelled and glued ex works



Resistance to warping due to 8 mm thick back wall