

# 90° TRIANGLE TABLE, METAL WELDED (124X90X90 CM)

MODEL 1073.129



## STANDARD VERSION

Tabletop, 3-layer chipboard (E1), melamine coated, highly abrasion-resistant, with 0.12" plastic edge, thickness: 0.98".

**Note:** Table height specifications refer to a tabletop thickness of 0.98".

Corner radius: 40 mm.

3-leg base frame, side parts round tube: 40/2 mm, frame square tube rounded: 40/20/2 mm. Frame firmly welded, epoxy coated, with plastic floor protector with level compensation.

Table top shape: 90° triangular.

Incl. 1 pair of rails for 1 Tidy Box.

## OPTIONS

- 1 pair of rails for Tidy Box
- Tabletop with ASSODUR® edge
- Table top HPL glued
- Table top compact board 0.47"
- Felt floor protectors
- Teflon floor protector
- Fixed castor
- Table frame chrome plated
- Height adjustment 3-7
- Tidy Box

## STANDARD

GS-zertifiziert gem. DIN EN 1729-1, DIN EN 1729-2, DIN EN 15372

FEMB level:2017 (Level 3)

## SIZES

SIZE	3	4	5	6	7	72 cm	75 cm
TABLE WIDTH	48.82 "	48.82 "	48.82 "	48.82 "	48.82 "	48.82 "	48.82 "
TABLE HEIGHT	22.83 "	25.20 "	27.56 "	29.92 "	32.28 "	28.35 "	29.53 "
TABLE DEPTH	23.23 "	23.23 "	23.23 "	23.23 "	23.23 "	23.23 "	23.23 "
ADJUSTMENT DIMENSION	35.43 "	35.43 "	35.43 "	35.43 "	35.43 "	35.43 "	35.43 "
STACKABILITY	-	-	-	-	-	-	-
NUMBER OF SEATS	1	1	1	1	1	1	1
WEIGHT	58 lb	60 lb	61 lb	62 lb	63 lb	61 lb	62 lb

Our range of materials and colors can be found in the A2S material overview.



A2S-Furnishing Systems Ltd.  
 ASS-Einrichtungssysteme GmbH  
 info@a2s.com  
 WWW.A2S.COM

# 90° TRIANGLE TABLE, METAL WELDED (124X90X90 CM)

MODEL 1073.129



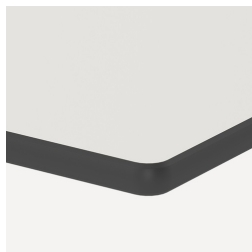
## BENEFITS/SPECIALS



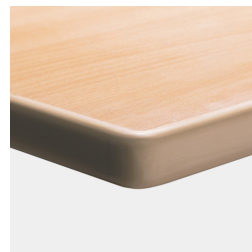
Melamine coated table top with robust plastic edge



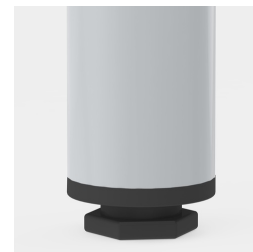
Optional table top with 40 mm corner radius



Optional compact board as table top



Optional melamine coated table top with ASSODUR® edge



Floor saver with level compensation compensates for uneven floors



Optional rack mobile by means of 1 fixed castor



Includes a pair of rails for optional Tidy Box