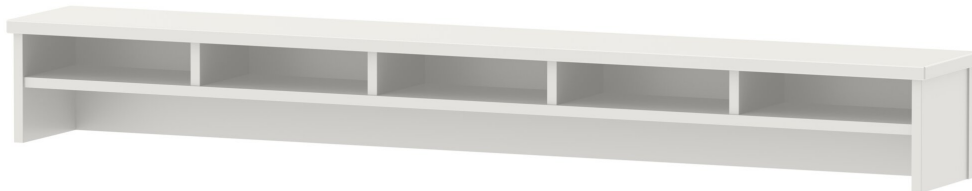


6015 (TABLE WIDTH 180) MODEL 6015



STANDARD VERSION

Body, 3-layer particle board (E1), melamine coated, highly abrasion-resistant, with 1 mm plastic edge, thickness 19 mm.
Rear panel, 3-layer chipboard (E1), melamine-coated, highly abrasion-resistant, grooved all around, thickness 8 mm.
Top, 3-layer chipboard (E1), melamine coated, highly abrasion resistant, with 3 mm plastic edge, thickness: 25 mm.
The table top contains 5 compartments.

OPTIONS

- Decoration group 2
- Table top HPL glued
- Table top glued with solid wood edge glue-in crowned

SIZES

TABLE HEIGHT	8.86 "	12.60 "
TABLE DEPTH	10.24 "	10.24 "
STACKABILITY	-	-
WEIGHT	78 lb	79 lb

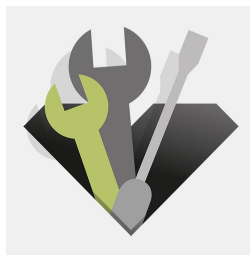
BENEFITS/SPECIALS



Melamine coated table top with robust plastic edge



Storage compartment creates order and preserves overview



Can be retrofitted at any time

Our range of materials and colors can be found in the A2S material overview.



A2S-Furnishing Systems Ltd.
ASS-Einrichtungssysteme GmbH
info@a2s.com
WWW.A2S.COM