



STANDARD VERSION

Body, 3-layer particle board (E1), melamine coated, highly abrasion-resistant, with 1 mm plastic edge, thickness 19 mm.
Rear panel, 3-layer chipboard (E1), melamine-coated, highly abrasion-resistant, grooved all around, thickness 8 mm.
Back panel, 3-layer chipboard (E1), melamine coated, highly abrasion-resistant, grooved all around, thickness 8 mm.
Doors, 3-layer particle board (E1), melamine coated, highly abrasion resistant, with 2 mm plastic edge, thickness 19 mm.
Arch handle chrome matt
Note: 1 folder height (OH) $\hat{=}$ 38.4 cm

OPTIONS

- Decoration group 2
- Front HPL glued
- Handle PG 2
- Front decors price group 2
- Shelf (additional)
- Lock with pin cylinder change core

STANDARD

DIN EN 14074, DIN EN 14073-2, DIN EN 14073-3, DIN EN 16121, DIN EN 16122

FEMB level:2017 (Level 3)

TECHNICAL SPECIFICATIONS

FOLDER HEIGHT	2
WIDTH	16.14 "
TOTAL HEIGHT	31.10 "
HEIGHT OF TOP	31.10 "
CABINET	
DEPTH	23.62 "
NO. OF	1
ADJUSTABLE	
SHELVES	
WEIGHT	62 lb

BENEFITS/SPECIALS



Board material melamine coated with robust plastic edge



1 OH cabinet with handle or lock



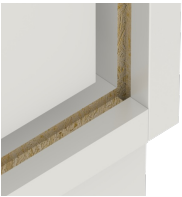
Metal cup hinges with 240° opening angle



Pull-out proof shelf supports



Carcass firmly dowelled and glued ex works



Resistance to warping due to 8 mm thick back wall