



STANDARD VERSION

Note: 1 folder height (OH) \triangleq 38.4 cm

5 FH, 1 door. 1 fixed shelf on top, 1 fixed construction shelf on bottom. 1 large Tidy Box on the bottom as well as optionally 2 large Tidy Boxes or 4 small Tidy Boxes or 1 large Tidy Box and 2 small Tidy B4oxes.

OPTIONS

- Plate cylinder
- Lock with pin cylinder change core
- Front decors Price group 1
- Front decors price group 2

STANDARD

FEMB level:2017 (Level 3)

GS-zertifiziert gem. DIN EN 15372:2017-02

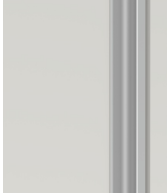
TECHNICAL SPECIFICATIONS

FOLDER HEIGHT	5
WIDTH	18.90 "
TOTAL HEIGHT	80.31 "
DEPTH	22.83 "
NO. OF FIXED SHELVES	2
WEIGHT	141 lb

BENEFITS/SPECIALS



Board material melamine coated with robust plastic edge



Cabinet-height handles keep the escape route clear and are easy to reach from any height.



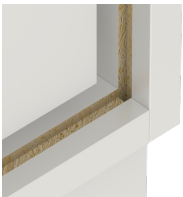
In 3 different equipment variants.



Pull-out proof shelf supports



Support panel material flame-retardant according to DIN 4102 B1



Resistance to warping due to 8 mm thick back wall



Carcass firmly dowelled and glued ex works