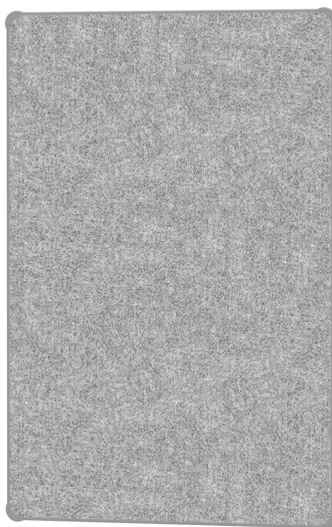


# SLIDING BOARD ELEMENT PINBOARD (W 80CM/H 120 CM)

MODEL 6814423



## STANDARD VERSION

Double-grooved aluminum board rails with plastic caps at all ends. Comes in a variety of lengths. Mounting of the board elements also possible in landscape format (smaller distance between rails).

PIN surfaces covered with fabric, flame-retardant fabric in accordance with EN 1021 1&2, PVC-free. With rounded and waterproof molded ASSODUR® polyurethane edges on all sides.

Adjustment of the board in aluminum wall rail in two levels, mainly front level.

## STANDARD

DIN EN 14434

## TECHNICAL SPECIFICATIONS

WIDTH	31.50 "
HEIGHT	47.24 "
PYLON HEIGHT	106.30 "
WEIGHT	7 lb

Our range of materials and colors can be found in the A2S material overview.



A2S-Furnishing Systems Ltd.  
ASS-Einrichtungssysteme GmbH  
info@a2s.com  
WWW.A2S.COM

# SLIDING BOARD ELEMENT PINBOARD (W 80CM/H 120 CM)

MODEL 6814423



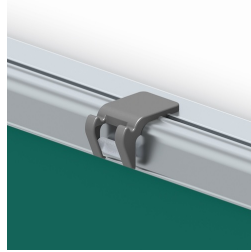
## BENEFITS/SPECIALS



Board elements with ASSODUR® edge can be moved one behind the other



Invisible rail fastening compensates for wall unevenness



Including picture clamps with integrated gallery hooks



Plastic caps prevent accidental ejection



Removable board elements



Can be mounted on cabinet wall



Available in 3 different colors