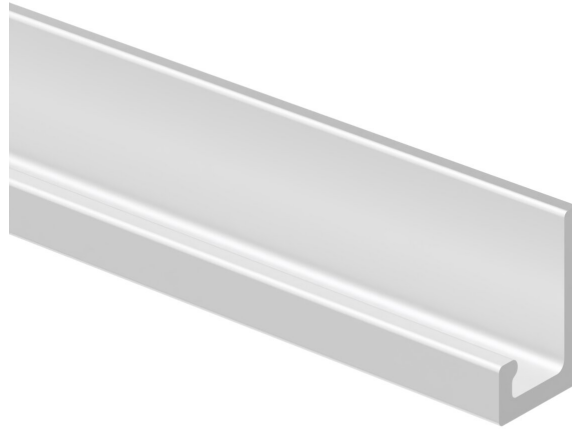


PARKING RAIL MODEL 0216



STANDARD VERSION

Parking rail for ladder made of extruded profiles, natural anodized aluminium. Maximum length 500 cm

TECHNICAL SPECIFICATIONS

WIDTH	196.85 "
HEIGHT	1.18 "
DEPTH	0.79 "
WEIGHT	2 lb

Our range of materials and colors can be found in the A2S material overview.



A2S-Furnishing Systems Ltd.
ASS-Einrichtungssysteme GmbH
info@a2s.com
WWW.A2S.COM