

MONO-COLUMN TABLE, HEIGHT-ADJUSTABLE (W 39.37"/D 27.56") RECTANGLE

MODEL 7610.107



STANDARD VERSION

Tabletop, 3-layer chipboard (E1), melamine coated, highly abrasion-resistant, with 0.12" plastic edge, thickness: 0.98".

Note: Table height specifications refer to a tabletop thickness of 0.98".

Table mounting plate, steel: 0.12".

Table column, pneumatic height adjustment, square: 2.64" x 2.64". Height adjustment by means of safety hand release under the table top. Table column powder coated.

4-star powder coated base, with 4 double swivel locking casters with rubber coating.

Table top shape: rectangular

OPTIONS

- Table top finishes price group 2
- Table top compact board 0.47"
- Front panel made of perforated steel plate
- Table top HPL glued
- Safe deposit drawer lockable

STANDARD

GS-zertifiziert gem. DIN EN 15372

FEMB level:2017 (Level 3)

SIZES

| | |
|-----------------|---------------|
| TABLE WIDTH | 39.37 " |
| TABLE HEIGHT | 27.95-43.70 " |
| TABLE DEPTH | 27.56 " |
| STACKABILITY | - |
| NUMBER OF SEATS | 1 |
| WEIGHT | 56 lb |

Our range of materials and colors can be found in the A2S material overview.



A2S-Furnishing Systems Ltd.
ASS-Einrichtungssysteme GmbH
info@a2s.com
WWW.A2S.COM

MONO-COLUMN TABLE, HEIGHT-ADJUSTABLE (W 39.37"/D 27.56") RECTANGLE

MODEL 7610.107



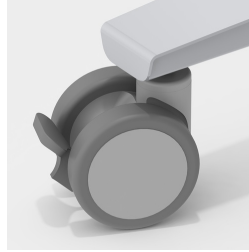
BENEFITS/SPECIALS



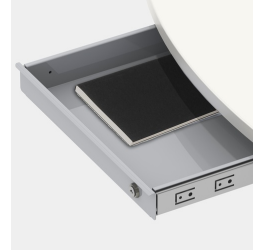
Melamine coated table top with robust plastic edge



Safety hand release prevents unintentional triggering of height adjustment



Including 4 robust double swivel casters with total locking device



Optionally with lockable steel valuables drawer



Infinitely height-adjustable in the range of 71-111 cm



Can also be used as a mobile lectern